

# ANAPC5 Polyclonal Antibody



Catalog Number: 165193

## Product name

ANAPC5 Polyclonal Antibody

## Specificity

Human, Mouse, Rat

## Antibody description

Polyclonal antibody to ANAPC5

## Preparation

Antigen: Recombinant fusion protein containing a sequence corresponding to amino acids 1-250 of human ANAPC5 (NP\_057321.2).

## Formulation

PBS with 0.02% sodium azide, 50% glycerol, pH7.3.

## Storage

Store at -20°C. Avoid freeze / thaw cycles.

## Clonality

Polyclonal

## Ig Type

Rabbit IgG

## Applications

WB, IHC, IP

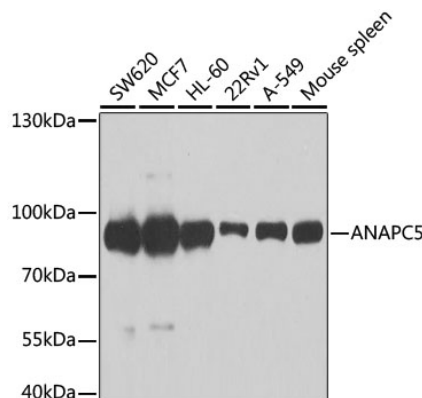
## Dilutions

WB 1:500 - 1:2000

IHC 1:50 - 1:200

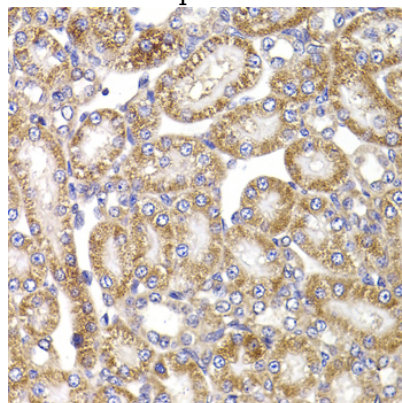
IP 1:50 - 1:100

## Validations



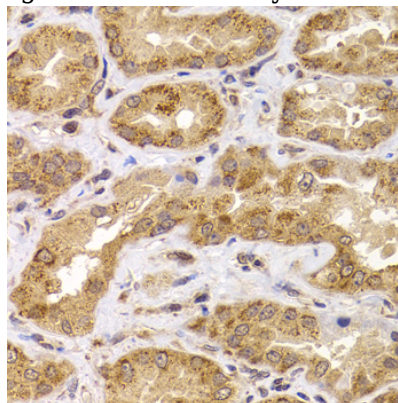
Western blot - ANAPC5 Polyclonal Antibody

Western blot analysis of extracts of various cell lines, using ANAPC5 antibody at 1:1000 dilution. Secondary antibody: HRP Goat Anti-Rabbit IgG (H+L) at 1:10000 dilution. Lysates/proteins: 25ug per lane. Blocking buffer: 3% nonfat dry milk in TBST. Detection: ECL Basic Kit. Exposure time: 90s.



Immunohistochemistry - ANAPC5 Polyclonal Antibody

Immunohistochemistry of paraffin-embedded rat kidney using ANAPC5 antibody at dilution of 1:100



(40x lens).

# ANAPC5 Polyclonal Antibody

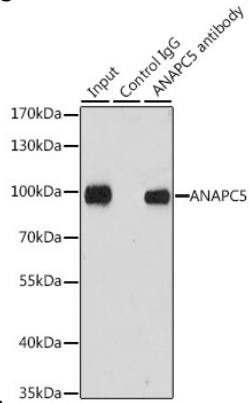


Catalog Number: 165193

## Immunohistochemistry - ANAPC5 Polyclonal Antibody

Immunohistochemistry of paraffin-embedded human kidney using ANAPC5 antibody at dilution

of 1:100 (40x lens).



## Immunoprecipitation - ANAPC5 Polyclonal Antibody

Immunoprecipitation analysis of 200ug extracts of MCF-7 cells, using 3 ug ANAPC5 antibody . Western blot was performed from the immunoprecipitate using ANAPC5 antibody at a dilution of 1:1000.