

TUSC2 Polyclonal Antibody



Catalog Number: 165174

Product name

TUSC2 Polyclonal Antibody

Specificity

Human, Mouse, Rat

Antibody description

Polyclonal antibody to TUSC2

Preparation

Antigen: Recombinant fusion protein containing a sequence corresponding to amino acids 1-110 of human TUSC2 (NP_009206.1).

Formulation

PBS with 0.02% sodium azide, 50% glycerol, pH7.3.

Storage

Store at -20°C. Avoid freeze / thaw cycles.

Clonality

Polyclonal

Ig Type

Rabbit IgG

Applications

WB, IHC, IF

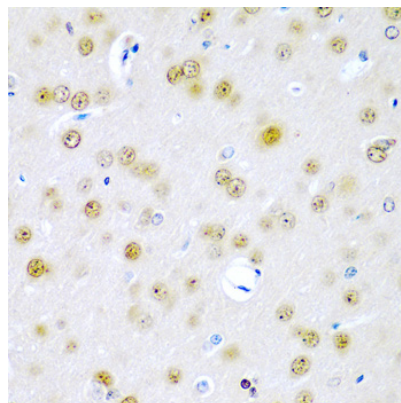
Dilutions

WB 1:500 - 1:2000

IHC 1:50 - 1:200

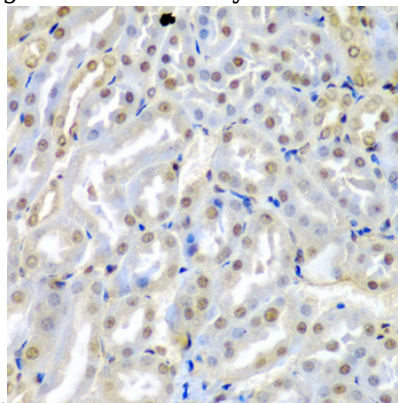
IF 1:50 - 1:100

Validations



Immunohistochemistry - TUSC2 Polyclonal Antibody

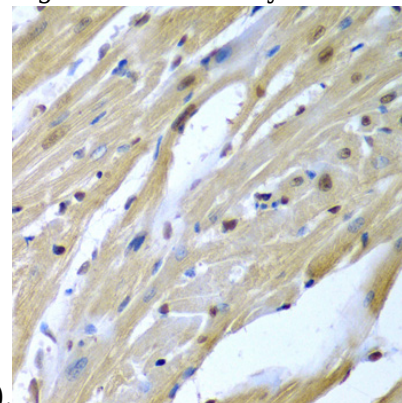
Immunohistochemistry of paraffin-embedded rat brain using TUSC2 antibody at dilution of 1:200



(40x lens).

Immunohistochemistry - TUSC2 Polyclonal Antibody

Immunohistochemistry of paraffin-embedded mouse kidney using TUSC2 antibody at dilution of



1:200 (40x lens).

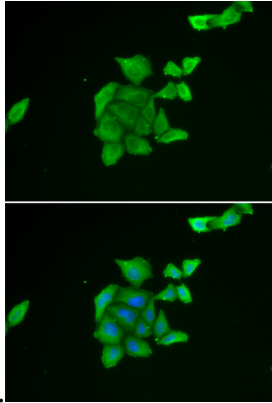
Immunohistochemistry - TUSC2 Polyclonal Antibody

TUSC2 Polyclonal Antibody



Catalog Number: 165174

Immunohistochemistry of paraffin-embedded mouse heart using TUSC2 antibody at dilution of



1:200 (40x lens).

Immunofluorescence - TUSC2 Polyclonal Antibody

Immunofluorescence analysis of U2OS cells using TUSC2 antibody . Blue: DAPI for nuclear staining.