

HIRIP3 Polyclonal Antibody



Catalog Number: 165142

Product name

HIRIP3 Polyclonal Antibody

Specificity

Human, Mouse, Rat

Antibody description

Polyclonal antibody to HIRIP3

Preparation

Antigen: Recombinant fusion protein containing a sequence corresponding to amino acids 417-556 of human HIRIP3 (NP_003600.2).

Formulation

PBS with 0.02% sodium azide, 50% glycerol, pH7.3.

Storage

Store at -20°C. Avoid freeze / thaw cycles.

Clonality

Polyclonal

Ig Type

Rabbit IgG

Applications

WB, IHC, IF

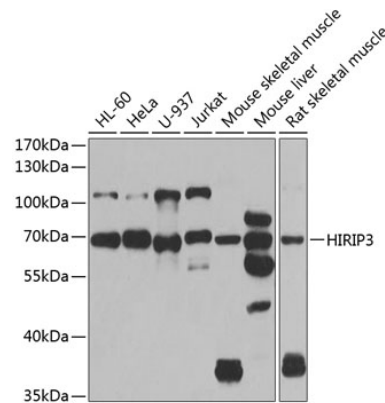
Dilutions

WB 1:500 - 1:2000

IHC 1:50 - 1:200

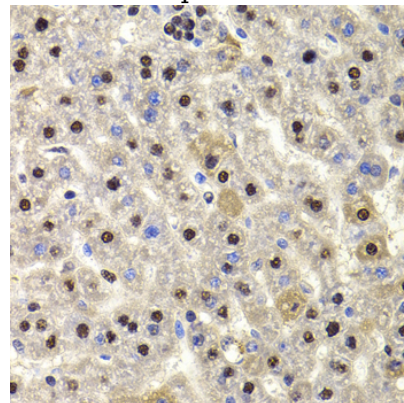
IF 1:50 - 1:100

Validations



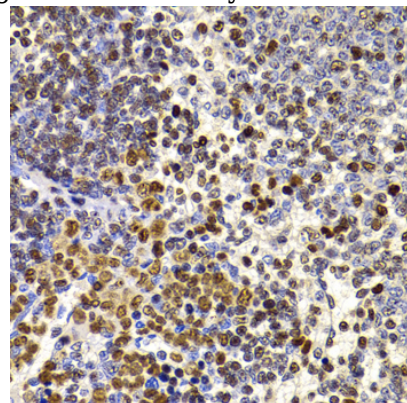
Western blot - HIRIP3 Polyclonal Antibody

Western blot analysis of extracts of various cell lines, using HIRIP3 antibody at 1:1000 dilution. Secondary antibody: HRP Goat Anti-Rabbit IgG (H+L) at 1:10000 dilution. Lysates/proteins: 25ug per lane. Blocking buffer: 3% nonfat dry milk in TBST. Detection: ECL Basic Kit. Exposure time: 90s.



Immunohistochemistry - HIRIP3 Polyclonal Antibody

Immunohistochemistry of paraffin-embedded rat liver using HIRIP3 antibody at dilution of 1:100



(40x lens).

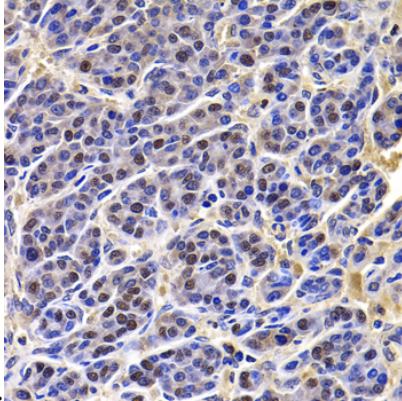
HIRIP3 Polyclonal Antibody



Catalog Number: 165142

Immunohistochemistry - HIRIP3 Polyclonal Antibody

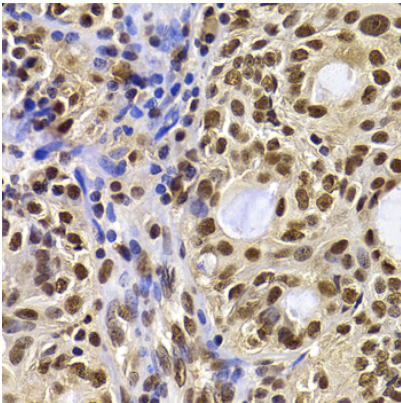
Immunohistochemistry of paraffin-embedded rat spleen using HIRIP3 antibody at dilution of 1:100



(40x lens).

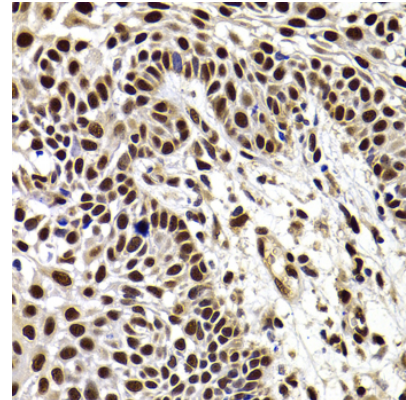
Immunohistochemistry - HIRIP3 Polyclonal Antibody

Immunohistochemistry of paraffin-embedded human liver cancer using HIRIP3 antibody at dilution of 1:100 (40x lens).



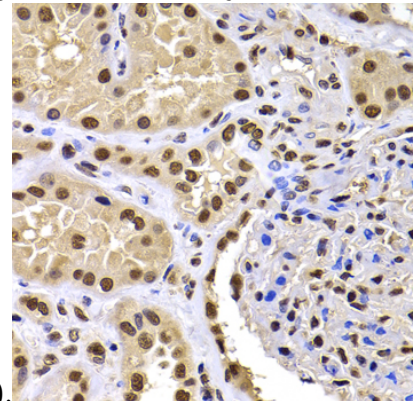
Immunohistochemistry - HIRIP3 Polyclonal Antibody

Immunohistochemistry of paraffin-embedded human oophoroma using HIRIP3 antibody at dilution of 1:100 (40x lens).



Immunohistochemistry - HIRIP3 Polyclonal Antibody

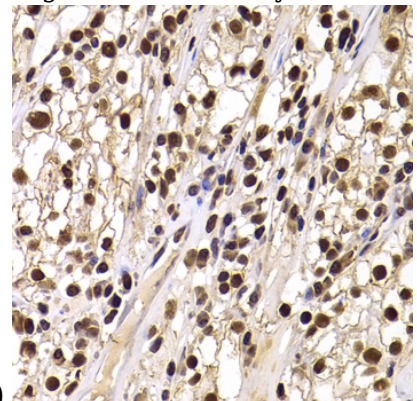
Immunohistochemistry of paraffin-embedded human well-differentiated squamous skin carcinoma using HIRIP3 antibody at dilution of



1:100 (40x lens).

Immunohistochemistry - HIRIP3 Polyclonal Antibody

Immunohistochemistry of paraffin-embedded human kidney using HIRIP3 antibody at dilution of



1:100 (40x lens).

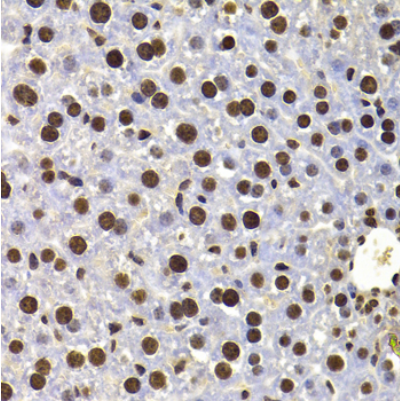
Immunohistochemistry - HIRIP3 Polyclonal Antibody

HIRIP3 Polyclonal Antibody



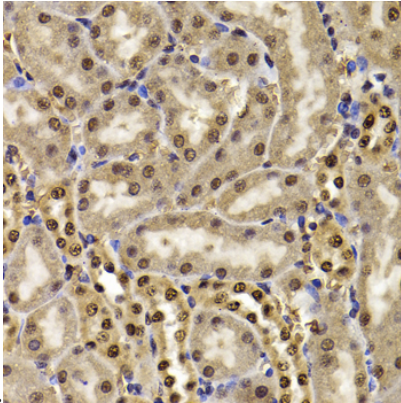
Catalog Number: 165142

Immunohistochemistry of paraffin-embedded human kidney cancer using HIRIP3 antibody at dilution of 1:100 (40x lens).



Immunohistochemistry - HIRIP3 Polyclonal Antibody

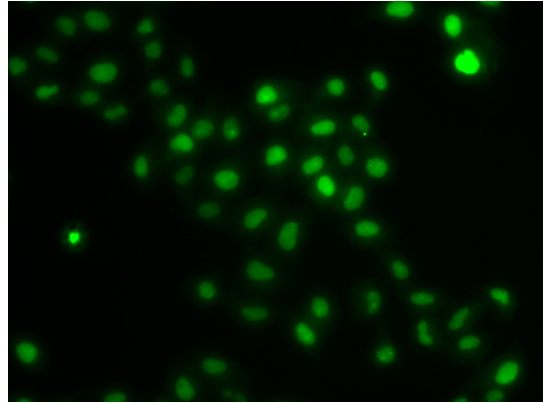
Immunohistochemistry of paraffin-embedded mouse liver using HIRIP3 antibody at dilution of



1:100 (40x lens).

Immunohistochemistry - HIRIP3 Polyclonal Antibody

Immunohistochemistry of paraffin-embedded mouse kidney using HIRIP3 antibody at dilution of 1:100 (40x lens).



Immunofluorescence - HIRIP3 Polyclonal Antibody

Immunofluorescence analysis of U2OS cells using HIRIP3 antibody .