

ZNF148 Polyclonal Antibody

Catalog Number: 165134

Product name

ZNF148 Polyclonal Antibody

Specificity

Human, Mouse, Rat

Antibody description

Polyclonal antibody to ZNF148

Preparation

Antigen: Recombinant fusion protein containing a sequence corresponding to amino acids 690-794 of human ZNF148 (NP_068799.2).

Formulation

PBS with 0.02% sodium azide, 50% glycerol, pH7.3.

Storage

Store at -20°C. Avoid freeze / thaw cycles.

Clonality

Polyclonal

Ig Type

Rabbit IgG

Applications

WB, IHC, IF

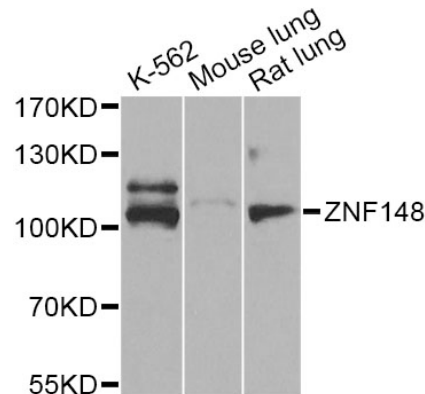
Dilutions

WB 1:500 - 1:1000

IHC 1:50 - 1:100

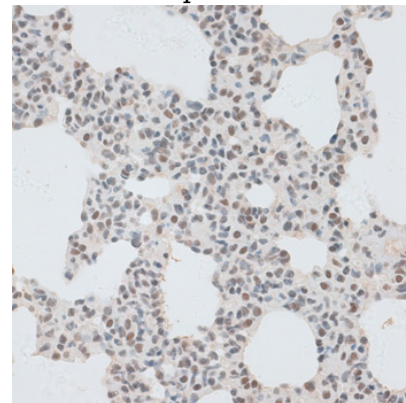
IF 1:20 - 1:100

Validations



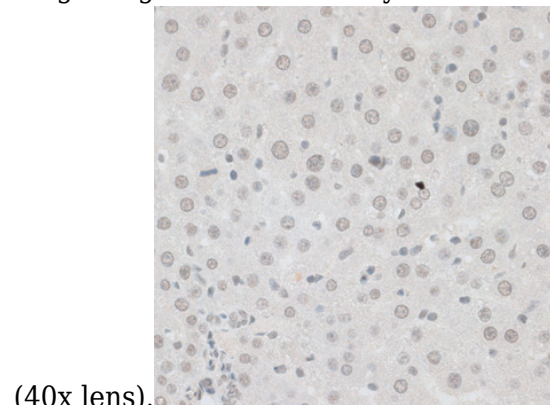
Western blot - ZNF148 Polyclonal Antibody

Western blot analysis of extracts of various cell lines, using ZNF148 Antibody at 1:1000 dilution. Secondary antibody: HRP Goat Anti-Rabbit IgG (H+L) at 1:10000 dilution. Lysates/proteins: 25ug per lane. Blocking buffer: 3% nonfat dry milk in TBST. Detection: ECL Basic Kit. Exposure time: 60s.



Immunohistochemistry - ZNF148 Polyclonal Antibody

Immunohistochemistry of paraffin-embedded rat lung using ZNF148 antibody at dilution of 1:100



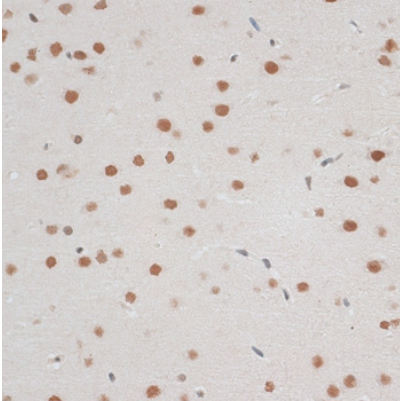
(40x lens).

ZNF148 Polyclonal Antibody

Catalog Number: 165134

Immunohistochemistry - ZNF148 Polyclonal Antibody

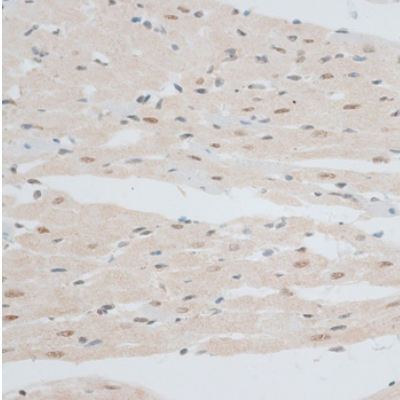
Immunohistochemistry of paraffin-embedded rat liver using ZNF148 antibody at dilution of 1:100



(40x lens).

Immunohistochemistry - ZNF148 Polyclonal Antibody

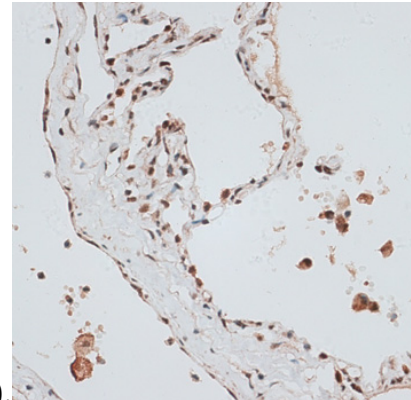
Immunohistochemistry of paraffin-embedded rat brain using ZNF148 antibody at dilution of 1:100



(40x lens).

Immunohistochemistry - ZNF148 Polyclonal Antibody

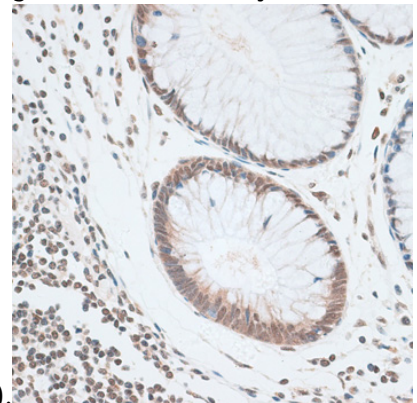
Immunohistochemistry of paraffin-embedded rat heart using ZNF148 antibody at dilution of 1:100



(40x lens).

Immunohistochemistry - ZNF148 Polyclonal Antibody

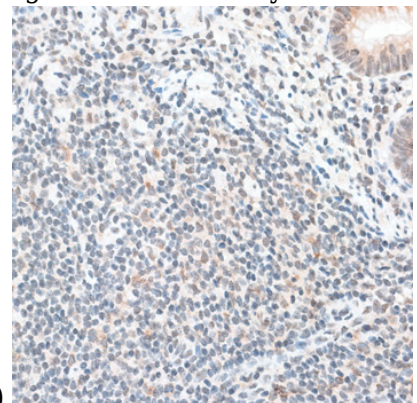
Immunohistochemistry of paraffin-embedded human lung using ZNF148 antibody at dilution of



1:100 (40x lens).

Immunohistochemistry - ZNF148 Polyclonal Antibody

Immunohistochemistry of paraffin-embedded human colon using ZNF148 antibody at dilution of



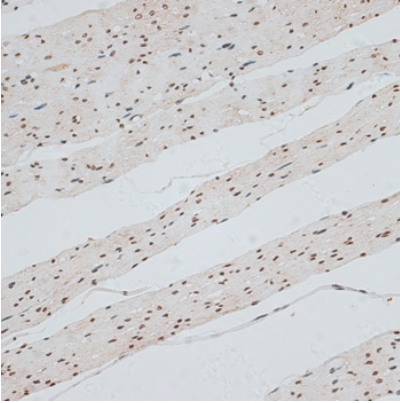
1:100 (40x lens).

Immunohistochemistry - ZNF148 Polyclonal Antibody

ZNF148 Polyclonal Antibody

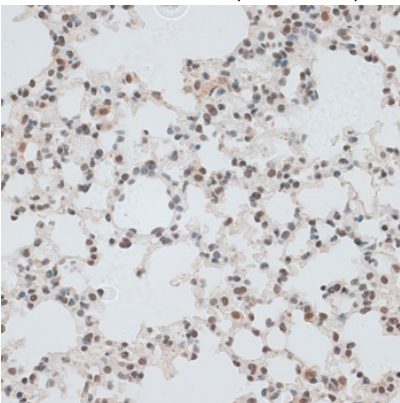
Catalog Number: 165134

Immunohistochemistry of paraffin-embedded human appendix using ZNF148 antibody at dilution of 1:100 (40x lens).



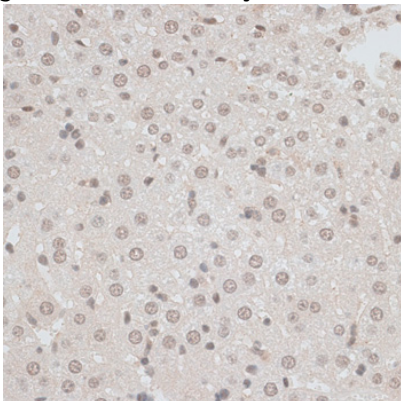
Immunohistochemistry - ZNF148 Polyclonal Antibody

Immunohistochemistry of paraffin-embedded human smooth muscle using ZNF148 antibody at dilution of 1:100 (40x lens).



Immunohistochemistry - ZNF148 Polyclonal Antibody

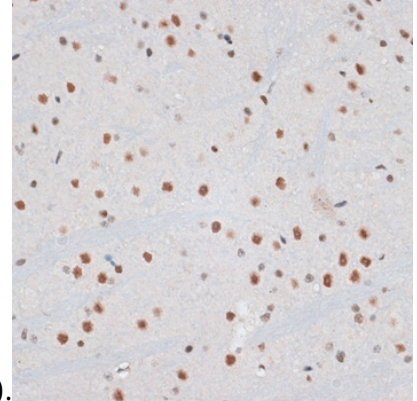
Immunohistochemistry of paraffin-embedded mouse lung using ZNF148 antibody at dilution of



1:100 (40x lens).

Immunohistochemistry - ZNF148 Polyclonal Antibody

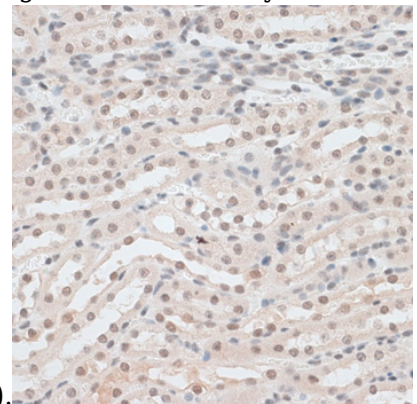
Immunohistochemistry of paraffin-embedded mouse liver using ZNF148 antibody at dilution of



1:100 (40x lens).

Immunohistochemistry - ZNF148 Polyclonal Antibody

Immunohistochemistry of paraffin-embedded mouse brain using ZNF148 antibody at dilution of



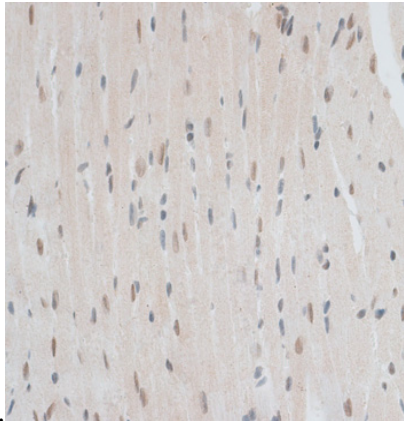
1:100 (40x lens).

Immunohistochemistry - ZNF148 Polyclonal Antibody

Immunohistochemistry of paraffin-embedded mouse kidney using ZNF148 antibody at dilution

ZNF148 Polyclonal Antibody

Catalog Number: 165134

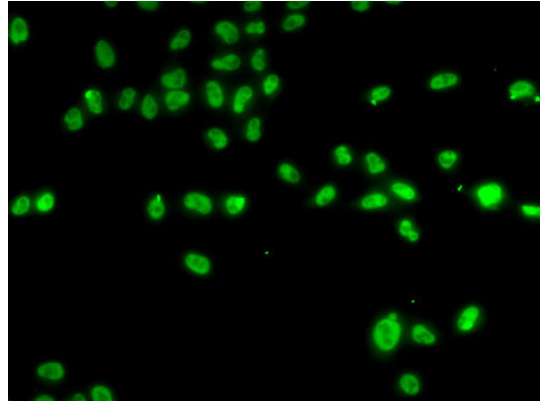


of 1:100 (40x lens).

Immunohistochemistry - ZNF148 Polyclonal Antibody

Immunohistochemistry of paraffin-embedded mouse heart using ZNF148 antibody at dilution of

1:100 (40x lens).



Immunofluorescence - ZNF148 Polyclonal Antibody

Immunofluorescence analysis of A-549 cells using ZNF148 antibody .