

SOD3 Polyclonal Antibody

Catalog Number: 165127

Product name

SOD3 Polyclonal Antibody

Specificity

Human, Mouse, Rat

Antibody description

Polyclonal antibody to SOD3

Preparation

Antigen: Recombinant fusion protein containing a sequence corresponding to amino acids 19-160 of human SOD3 (NP_003093.2).

Formulation

PBS with 0.02% sodium azide, 50% glycerol, pH7.3.

Storage

Store at -20°C. Avoid freeze / thaw cycles.

Clonality

Polyclonal

Ig Type

Rabbit IgG

Applications

WB, IHC, IF

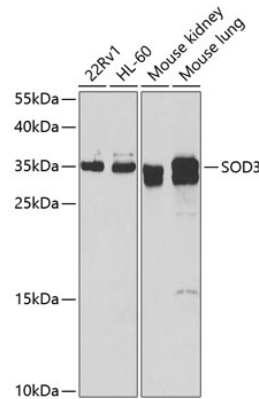
Dilutions

WB 1:500 - 1:2000

IHC 1:50 - 1:200

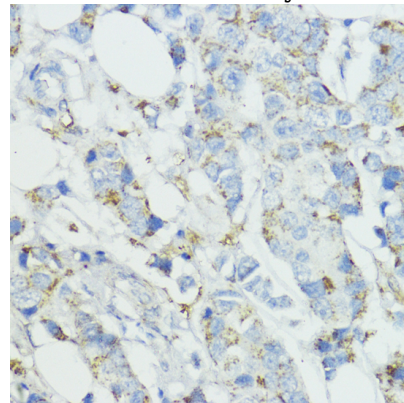
IF 1:50 - 1:200

Validations



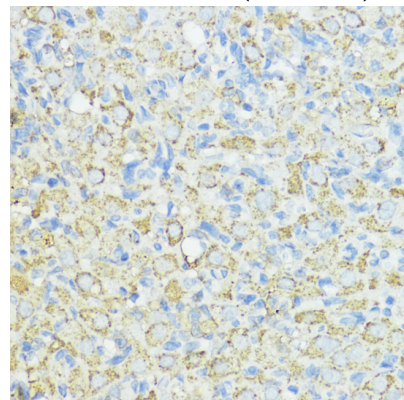
Western blot - SOD3 Polyclonal Antibody

Western blot analysis of extracts of various cell lines, using SOD3 antibody at 1:1000 dilution. Secondary antibody: HRP Goat Anti-Rabbit IgG (H+L) at 1:10000 dilution. Lysates/proteins: 25ug per lane. Blocking buffer: 3% nonfat dry milk in TBST.



Immunohistochemistry - SOD3 Polyclonal Antibody

Immunohistochemistry of paraffin-embedded human mammary cancer using SOD3 antibody at dilution of 1:100 (40x lens).

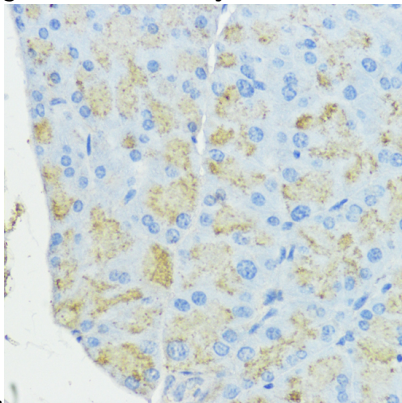


SOD3 Polyclonal Antibody

Catalog Number: 165127

Immunohistochemistry - SOD3 Polyclonal Antibody

Immunohistochemistry of paraffin-embedded rat ovary using SOD3 antibody at dilution of 1:100



(40x lens).

Immunohistochemistry - SOD3 Polyclonal Antibody

Immunohistochemistry of paraffin-embedded mouse pancreas using SOD3 antibody at dilution of 1:100 (40x lens).