

SGCD Polyclonal Antibody



Catalog Number: 165125

Product name

SGCD Polyclonal Antibody

Specificity

Human, Mouse, Rat

Antibody description

Polyclonal antibody to SGCD

Preparation

Antigen: Recombinant fusion protein containing a sequence corresponding to amino acids 61-290 of human SGCD (NP_000328.2).

Formulation

PBS with 0.02% sodium azide, 50% glycerol, pH7.3.

Storage

Store at -20°C. Avoid freeze / thaw cycles.

Clonality

Polyclonal

Ig Type

Rabbit IgG

Applications

WB, IHC, IF

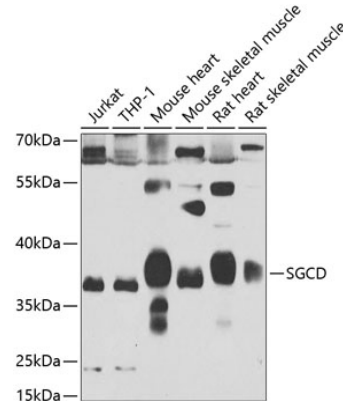
Dilutions

WB 1:500 - 1:2000

IHC 1:50 - 1:100

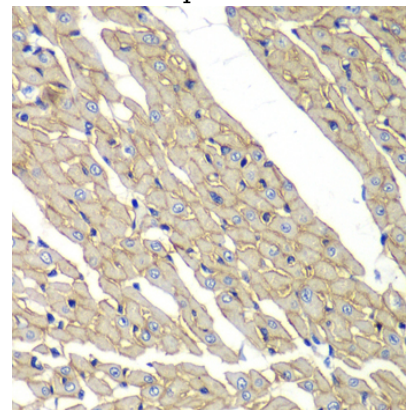
IF 1:50 - 1:100

Validations



Western blot - SGCD Polyclonal Antibody

Western blot analysis of extracts of various cell lines, using SGCD antibody at 1:1000 dilution. Secondary antibody: HRP Goat Anti-Rabbit IgG (H+L) at 1:10000 dilution. Lysates/proteins: 25ug per lane. Blocking buffer: 3% nonfat dry milk in TBST. Detection: ECL Basic Kit. Exposure time: 90s.



Immunohistochemistry - SGCD Polyclonal Antibody

Immunohistochemistry of paraffin-embedded rat heart using SGCD antibody at dilution of 1:100 (40x lens).