

# NASP Polyclonal Antibody



Catalog Number: 165106

## Product name

NASP Polyclonal Antibody

## Specificity

Human, Mouse, Rat

## Antibody description

Polyclonal antibody to NASP

## Preparation

Antigen: Recombinant fusion protein containing a sequence corresponding to amino acids 180-449 of human NASP (NP\_689511.2).

## Formulation

PBS with 0.02% sodium azide, 50% glycerol, pH7.3.

## Storage

Store at -20°C. Avoid freeze / thaw cycles.

## Clonality

Polyclonal

## Ig Type

Rabbit IgG

## Applications

WB, IHC, IF

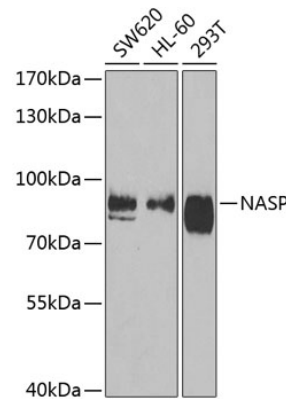
## Dilutions

WB 1:500 - 1:2000

IHC 1:50 - 1:200

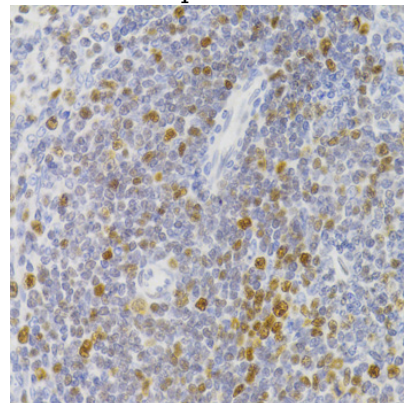
IF 1:50 - 1:200

## Validations



Western blot - NASP Polyclonal Antibody

Western blot analysis of extracts of various cell lines, using NASP antibody at 1:1000 dilution. Secondary antibody: HRP Goat Anti-Rabbit IgG (H+L) at 1:10000 dilution. Lysates/proteins: 25ug per lane. Blocking buffer: 3% nonfat dry milk in TBST. Detection: ECL Basic Kit. Exposure time: 90s.



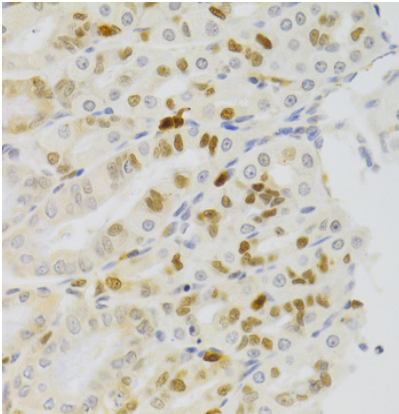
Immunohistochemistry - NASP Polyclonal Antibody

Immunohistochemistry of paraffin-embedded human breast cancer using NASP Antibody at dilution of 1:100 (40x lens).

# NASP Polyclonal Antibody

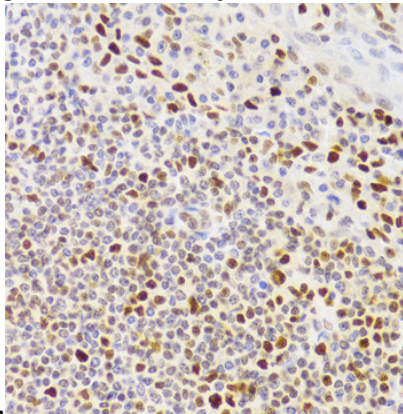


Catalog Number: 165106



Immunohistochemistry - NASP Polyclonal Antibody

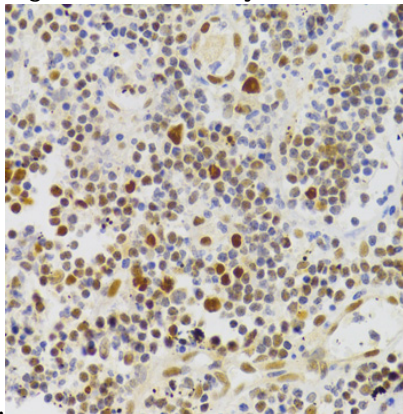
Immunohistochemistry of paraffin-embedded mouse liver using NASP Antibody at dilution of



1:100 (40x lens).

Immunohistochemistry - NASP Polyclonal Antibody

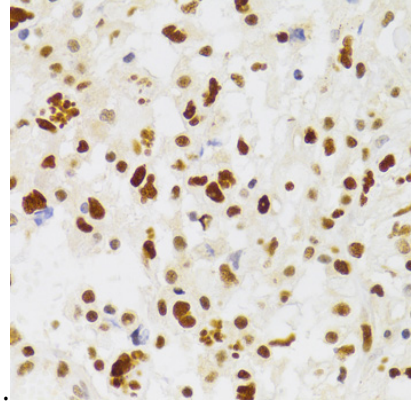
Immunohistochemistry of paraffin-embedded mouse spleen using NASP Antibody at dilution of



1:100 (40x lens).

Immunohistochemistry - NASP Polyclonal Antibody

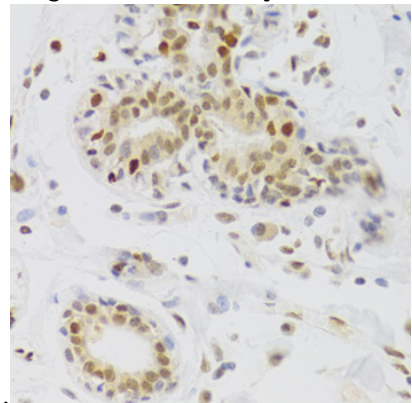
Immunohistochemistry of paraffin-embedded rat spleen using NASP Antibody at dilution of 1:100



(40x lens).

Immunohistochemistry - NASP Polyclonal Antibody

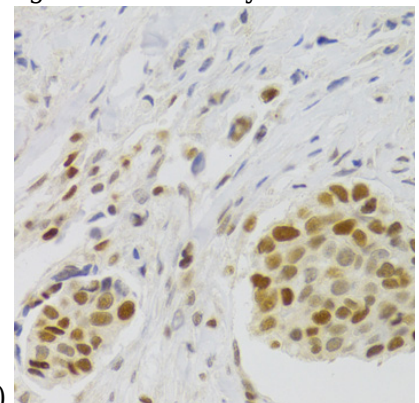
Immunohistochemistry of paraffin-embedded rat stomach using NASP Antibody at dilution of 1:100



(40x lens).

Immunohistochemistry - NASP Polyclonal Antibody

Immunohistochemistry of paraffin-embedded human tonsil using NASP Antibody at dilution of

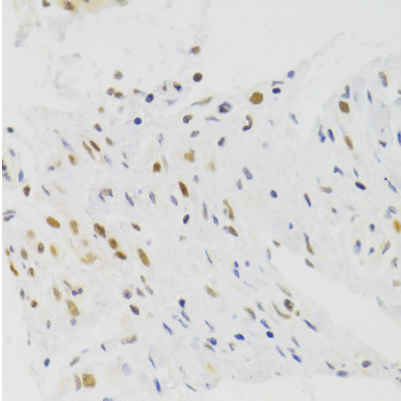


1:100 (40x lens).

Immunohistochemistry - NASP Polyclonal

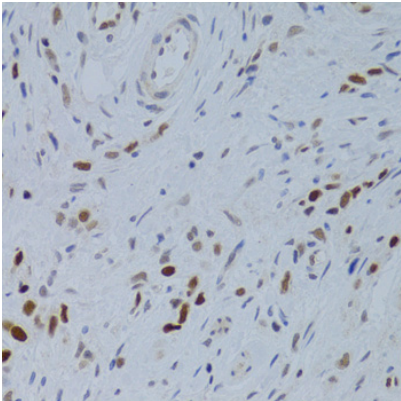
## Antibody

Immunohistochemistry of paraffin-embedded human appendicitis using NASP Antibody at dilution of 1:100 (40x lens).



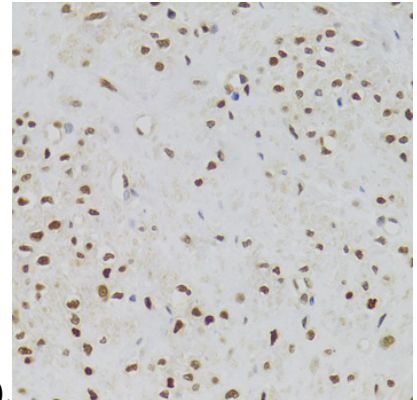
Immunohistochemistry - NASP Polyclonal Antibody

Immunohistochemistry of paraffin-embedded human brain astrocytoma using NASP Antibody at dilution of 1:100 (40x lens).



Immunohistochemistry - NASP Polyclonal Antibody

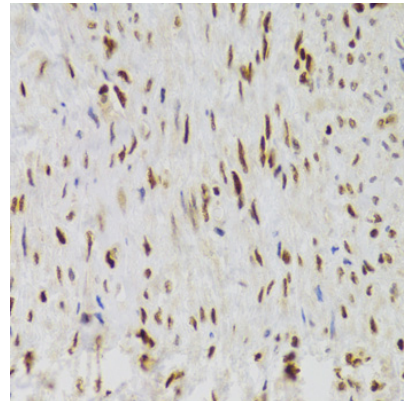
Immunohistochemistry of paraffin-embedded human breast using NASP Antibody at dilution of



1:100 (40x lens).

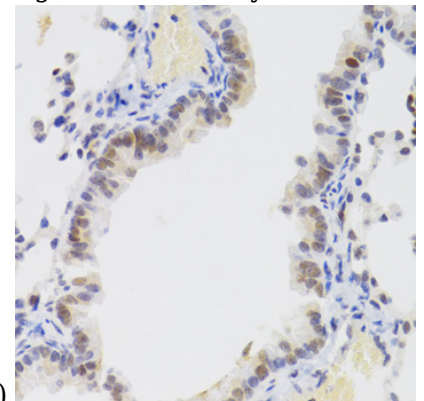
Immunohistochemistry - NASP Polyclonal Antibody

Immunohistochemistry of paraffin-embedded human breast cancer using NASP Antibody at dilution of 1:100 (40x lens).



Immunohistochemistry - NASP Polyclonal Antibody

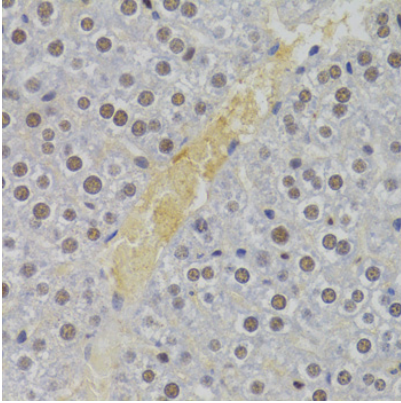
Immunohistochemistry of paraffin-embedded human stomach using NASP Antibody at dilution



of 1:100 (40x lens).

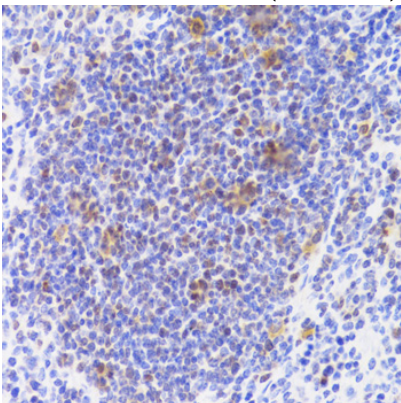
Immunohistochemistry - NASP Polyclonal Antibody

Immunohistochemistry of paraffin-embedded human gastric cancer using NASP Antibody at dilution of 1:100 (40x lens).



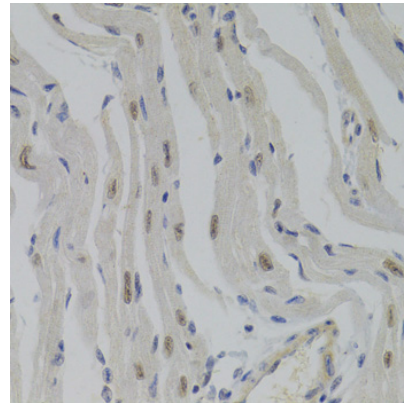
Immunohistochemistry - NASP Polyclonal Antibody

Immunohistochemistry of paraffin-embedded human leiomyoma of uterus using NASP Antibody at dilution of 1:100 (40x lens).



Immunohistochemistry - NASP Polyclonal Antibody

Immunohistochemistry of paraffin-embedded human adenomyosis using NASP Antibody at dilution of 1:100 (40x lens).



Immunohistochemistry - NASP Polyclonal Antibody

Immunohistochemistry of paraffin-embedded mouse lung using NASP Antibody at dilution of 1:100 (40x lens).