

MYO1C Polyclonal Antibody



Catalog Number: 165102

Product name

MYO1C Polyclonal Antibody

Specificity

Human, Mouse, Rat

Antibody description

Polyclonal antibody to MYO1C

Preparation

Antigen: Recombinant fusion protein containing a sequence corresponding to amino acids 769-1028 of human MYO1C (NP_203693.3).

Formulation

PBS with 0.02% sodium azide, 50% glycerol, pH7.3.

Storage

Store at -20°C. Avoid freeze / thaw cycles.

Clonality

Polyclonal

Ig Type

Rabbit IgG

Applications

WB, IHC, IF

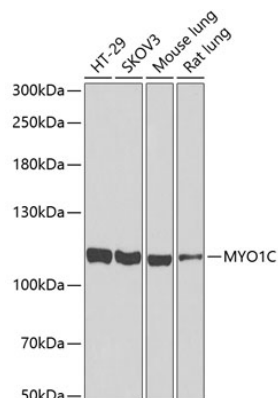
Dilutions

WB 1:500 - 1:2000

IHC 1:50 - 1:200

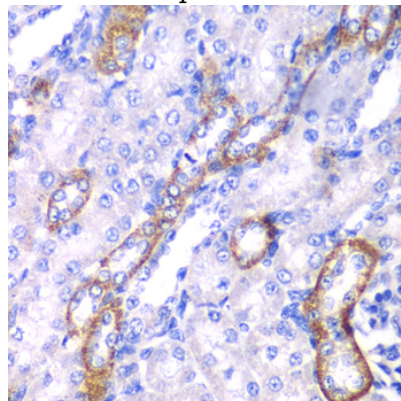
IF 1:50 - 1:100

Validations



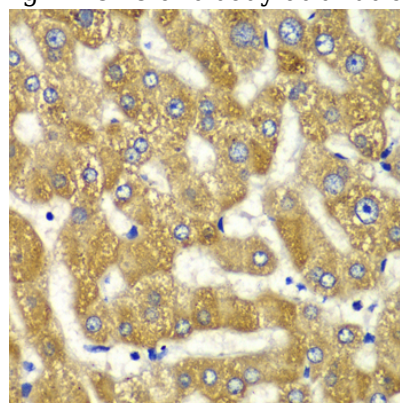
Western blot - MYO1C Polyclonal Antibody

Western blot analysis of extracts of various cell lines, using MYO1C antibody at 1:1000 dilution. Secondary antibody: HRP Goat Anti-Rabbit IgG (H+L) at 1:10000 dilution. Lysates/proteins: 25ug per lane. Blocking buffer: 3% nonfat dry milk in TBST. Detection: ECL Basic Kit. Exposure time: 90s.



Immunohistochemistry - MYO1C Polyclonal Antibody

Immunohistochemistry of paraffin-embedded rat kidney using MYO1C antibody at dilution of 1:100



(40x lens).

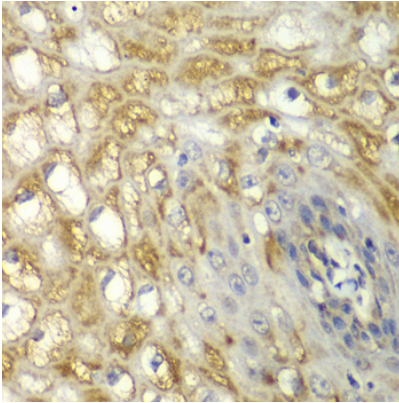
MYO1C Polyclonal Antibody



Catalog Number: 165102

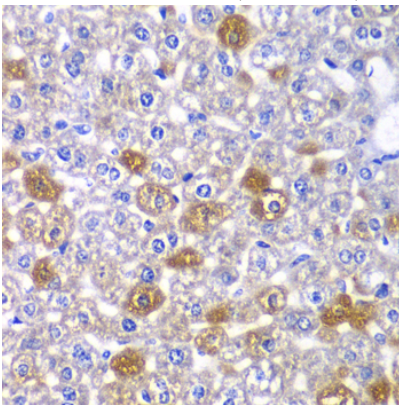
Immunohistochemistry - MYO1C Polyclonal Antibody

Immunohistochemistry of paraffin-embedded human liver injury using MYO1C antibody at dilution of 1:100 (40x lens).



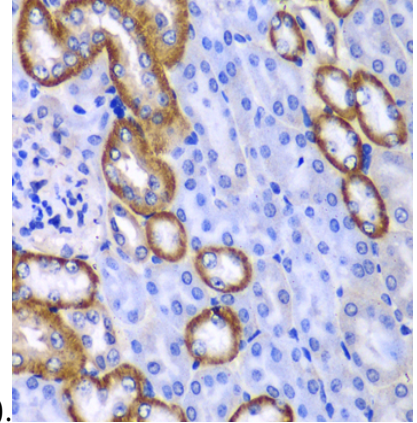
Immunohistochemistry - MYO1C Polyclonal Antibody

Immunohistochemistry of paraffin-embedded human esophagus using MYO1C antibody at dilution of 1:100 (40x lens).



Immunohistochemistry - MYO1C Polyclonal Antibody

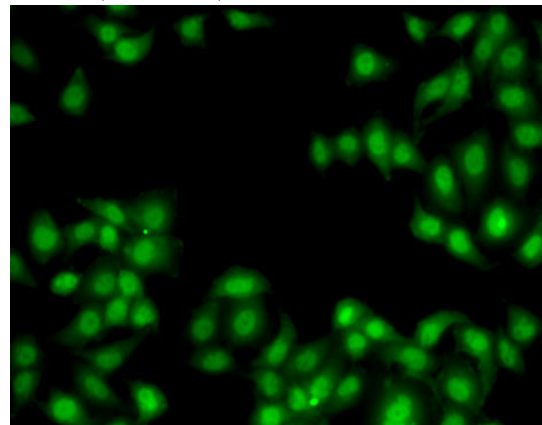
Immunohistochemistry of paraffin-embedded mouse liver using MYO1C antibody at dilution of



1:100 (40x lens).

Immunohistochemistry - MYO1C Polyclonal Antibody

Immunohistochemistry of paraffin-embedded mouse kidney using MYO1C antibody at dilution of 1:100 (40x lens).



Immunofluorescence - MYO1C Polyclonal Antibody

Immunofluorescence analysis of MCF7 cells using MYO1C antibody .