

# GPI Polyclonal Antibody



Catalog Number: 165090

## Product name

GPI Polyclonal Antibody

## Specificity

Human, Mouse, Rat

## Antibody description

Polyclonal antibody to GPI

## Preparation

Antigen: Recombinant fusion protein containing a sequence corresponding to amino acids 1-280 of human GPI (NP\_000166.2).

## Formulation

PBS with 0.02% sodium azide, 50% glycerol, pH7.3.

## Storage

Store at -20°C. Avoid freeze / thaw cycles.

## Clonality

Polyclonal

## Ig Type

Rabbit IgG

## Applications

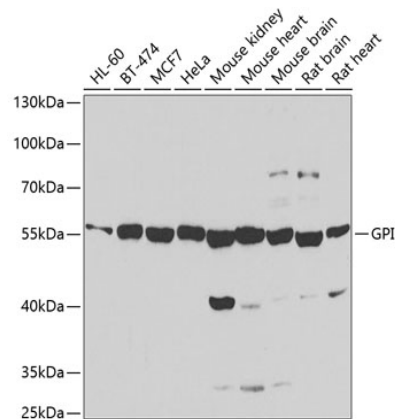
WB, IHC

## Dilutions

WB 1:500 - 1:2000

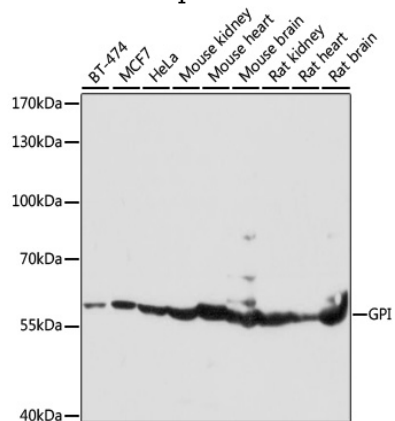
IHC 1:50 - 1:100

## Validations



Western blot - GPI Polyclonal Antibody

Western blot analysis of extracts of various cell lines, using GPI antibody at 1:1000 dilution. Secondary antibody: HRP Goat Anti-Rabbit IgG (H+L) at 1:10000 dilution. Lysates/proteins: 25ug per lane. Blocking buffer: 3% nonfat dry milk in TBST. Detection: ECL Basic Kit. Exposure time: 90s.



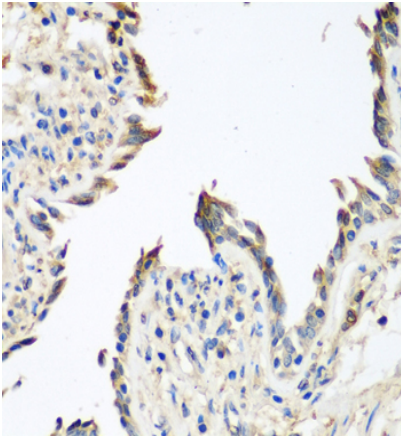
Western blot - GPI Polyclonal Antibody

Western blot analysis of extracts of various cells, using GPI antibody at 1:1000 dilution ratio through one-step method. Secondary antibody: HRP Goat Anti-Rabbit IgG (H+L) at 1:4000 dilution. Lysates/proteins: 25ug per lane. Blocking buffer: 3% nonfat dry milk in TBST. Detection: ECL Basic Kit. Exposure time: 10s.

# GPI Polyclonal Antibody

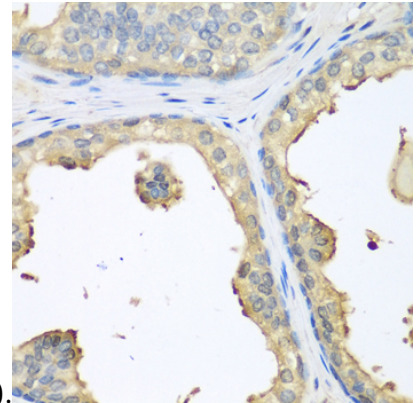
Catalog Number: 165090

---



Immunohistochemistry - GPI Polyclonal Antibody

Immunohistochemistry of paraffin-embedded human lung using GPI antibody at dilution of



1:100 (40x lens).

Immunohistochemistry - GPI Polyclonal Antibody

Immunohistochemistry of paraffin-embedded human prostate using GPI antibody at dilution of 1:100 (40x lens).