

# BLOC1S1 Polyclonal Antibody



Catalog Number: 165089

## Product name

BLOC1S1 Polyclonal Antibody

## Specificity

Mouse

## Antibody description

Polyclonal antibody to BLOC1S1

## Preparation

Antigen: Recombinant fusion protein containing a sequence corresponding to amino acids 29-153 of human BLOC1S1 (NP\_001478.2).

## Formulation

PBS with 0.02% sodium azide, 50% glycerol, pH7.3.

## Storage

Store at -20°C. Avoid freeze / thaw cycles.

## Clonality

Polyclonal

## Ig Type

Rabbit IgG

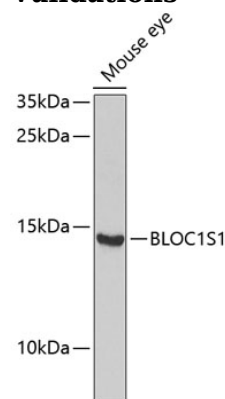
## Applications

WB

## Dilutions

WB 1:500 - 1:2000

## Validations



Western blot - BLOC1S1 Polyclonal Antibody

Western blot analysis of extracts of mouse eye, using BLOC1S1 Antibody at 1:1000 dilution. Secondary antibody: HRP Goat Anti-Rabbit IgG (H+L) at 1:10000 dilution. Lysates/proteins: 25ug per lane. Blocking buffer: 3% nonfat dry milk in TBST. Detection: ECL Enhanced Kit. Exposure time: 30s.