

SMTN Polyclonal Antibody



Catalog Number: 165015

General Information

Product name:

SMTN Polyclonal Antibody

Immunogen:

Applications:

WB

Specificity:

Human, Mouse, Rat

Antibody description:

Polyclonal antibody to SMTN

Properties

Preparation:

Antigen: Recombinant fusion protein containing a sequence corresponding to amino acids 65-325 of human SMTN (NP_001193946.1).

Formulation:

PBS with 0.02% sodium azide, 50% glycerol, pH7.3.

Storage:

Store at -20°C. Avoid freeze / thaw cycles.

Clonality:

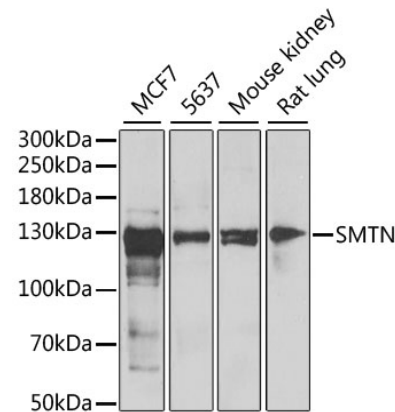
Polyclonal

Ig Type:Rabbit IgG

Applications

WB 1:500 - 1:2000

Validations



Western blot - SMTN Polyclonal Antibody

Western blot analysis of extracts of various cell lines, using SMTN antibody at 1:1000 dilution. Secondary antibody: HRP Goat Anti-Rabbit IgG (H+L) at 1:10000 dilution. Lysates/proteins: 25ug per lane. Blocking buffer: 3% nonfat dry milk in TBST. Detection: ECL Enhanced Kit. Exposure time: 5min.