

# PLA2G2D Polyclonal Antibody



Catalog Number: 164986

## Product name

PLA2G2D Polyclonal Antibody

## Specificity

Human, Mouse, Rat

## Antibody description

Polyclonal antibody to PLA2G2D

## Preparation

Antigen: Recombinant fusion protein containing a sequence corresponding to amino acids 21-145 of human PLA2G2D (NP\_036532.1).

## Formulation

PBS with 0.02% sodium azide, 50% glycerol, pH7.3.

## Storage

Store at -20°C. Avoid freeze / thaw cycles.

## Clonality

Polyclonal

## Ig Type

Rabbit IgG

## Applications

WB, IHC, IF

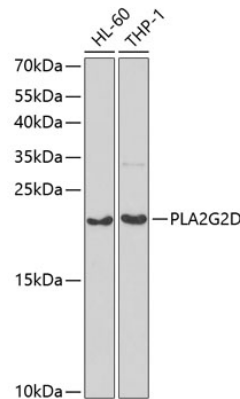
## Dilutions

WB 1:500 - 1:2000

IHC 1:50 - 1:200

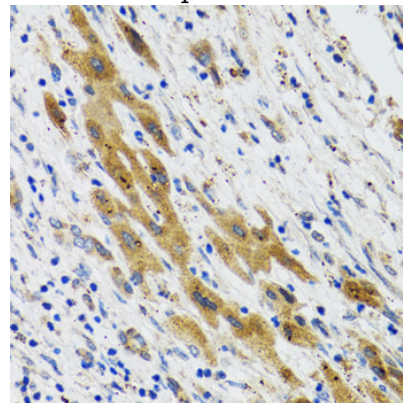
IF 1:10 - 1:100

## Validations



## Western blot - PLA2G2D Polyclonal Antibody

Western blot analysis of extracts of various cell lines, using PLA2G2D antibody at 1:1000 dilution. Secondary antibody: HRP Goat Anti-Rabbit IgG (H+L) at 1:10000 dilution. Lysates/proteins: 25ug per lane. Blocking buffer: 3% nonfat dry milk in TBST. Detection: ECL Basic Kit. Exposure time: 90s.



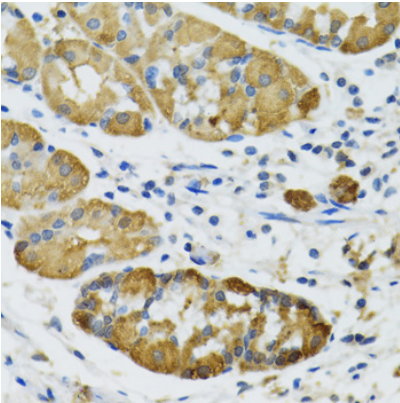
## Immunohistochemistry - PLA2G2D Polyclonal Antibody

Immunohistochemistry of paraffin-embedded human liver cancer using PLA2G2D antibody at dilution of 1:100 (40x lens).

# PLA2G2D Polyclonal Antibody



Catalog Number: 164986

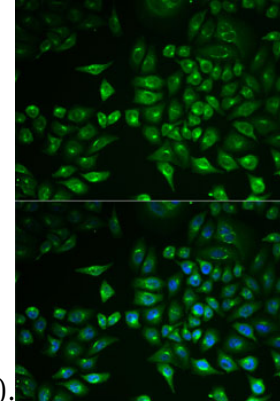
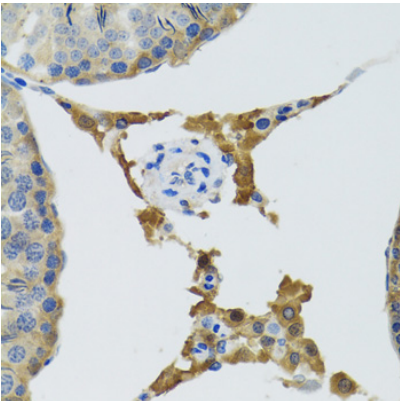


Immunohistochemistry - PLA2G2D Polyclonal Antibody

Immunohistochemistry of paraffin-embedded mouse testis using PLA2G2D antibody at dilution

Immunohistochemistry - PLA2G2D Polyclonal Antibody

Immunohistochemistry of paraffin-embedded human stomach using PLA2G2D antibody at dilution of 1:100 (40x lens).



of 1:100 (40x lens).

Immunofluorescence - PLA2G2D Polyclonal Antibody

Immunofluorescence analysis of MCF7 cells using PLA2G2D antibody . Blue: DAPI for nuclear staining.