

# MTA3 Polyclonal Antibody

Catalog Number: 164972

## Product name

MTA3 Polyclonal Antibody

## Specificity

Human, Mouse, Rat

## Antibody description

Polyclonal antibody to MTA3

## Preparation

Antigen: Recombinant fusion protein containing a sequence corresponding to amino acids 40-330 of human MTA3 (NP\_065795.1).

## Formulation

PBS with 0.02% sodium azide, 50% glycerol, pH7.3.

## Storage

Store at -20°C. Avoid freeze / thaw cycles.

## Clonality

Polyclonal

## Ig Type

Rabbit IgG

## Applications

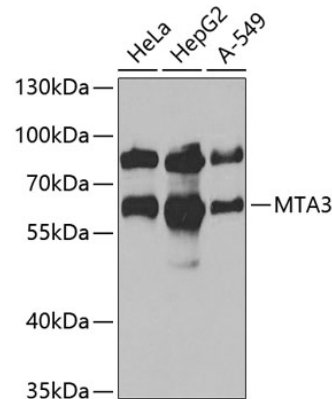
WB, IHC

## Dilutions

WB 1:500 - 1:2000

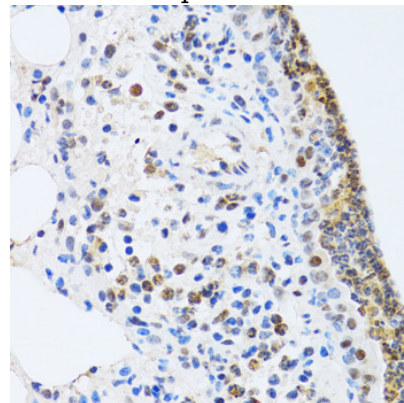
IHC 1:50 - 1:200

## Validations



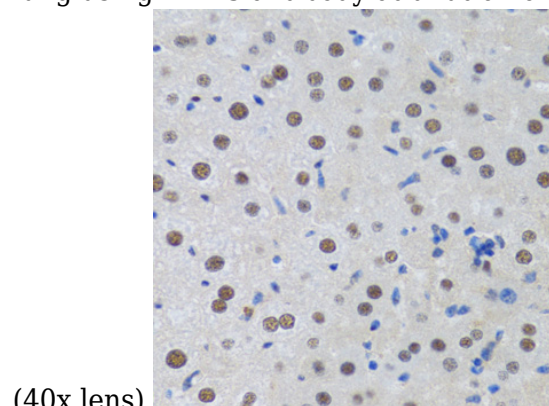
Western blot - MTA3 Polyclonal Antibody

Western blot analysis of extracts of various cell lines, using MTA3 antibody at 1:1000 dilution. Secondary antibody: HRP Goat Anti-Rabbit IgG (H+L) at 1:10000 dilution. Lysates/proteins: 25ug per lane. Blocking buffer: 3% nonfat dry milk in TBST. Detection: ECL Basic Kit. Exposure time: 30s.



Immunohistochemistry - MTA3 Polyclonal Antibody

Immunohistochemistry of paraffin-embedded rat lung using MTA3 antibody at dilution of 1:100



(40x lens).

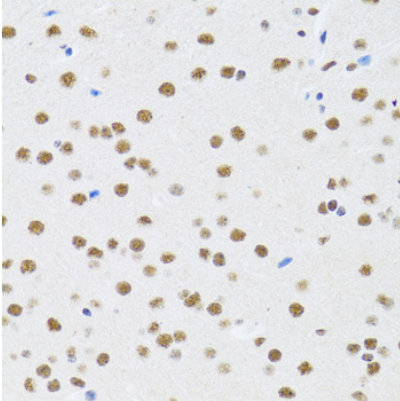
# MTA3 Polyclonal Antibody



Catalog Number: 164972

## Immunohistochemistry - MTA3 Polyclonal Antibody

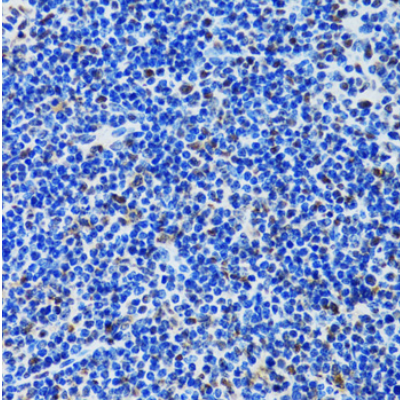
Immunohistochemistry of paraffin-embedded rat liver using MTA3 antibody at dilution of 1:100



(40x lens).

## Immunohistochemistry - MTA3 Polyclonal Antibody

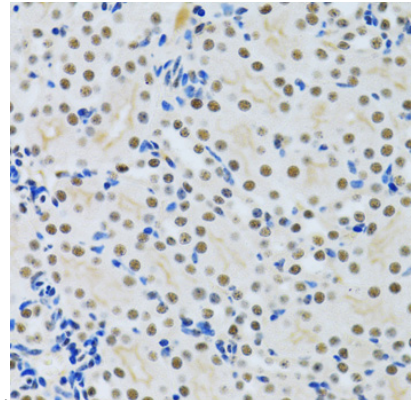
Immunohistochemistry of paraffin-embedded rat brain using MTA3 antibody at dilution of 1:100



(40x lens).

## Immunohistochemistry - MTA3 Polyclonal Antibody

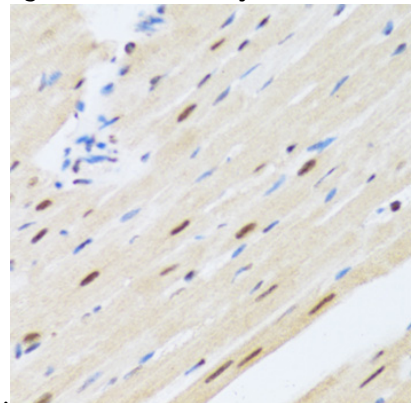
Immunohistochemistry of paraffin-embedded rat spleen using MTA3 antibody at dilution of 1:100



(40x lens).

## Immunohistochemistry - MTA3 Polyclonal Antibody

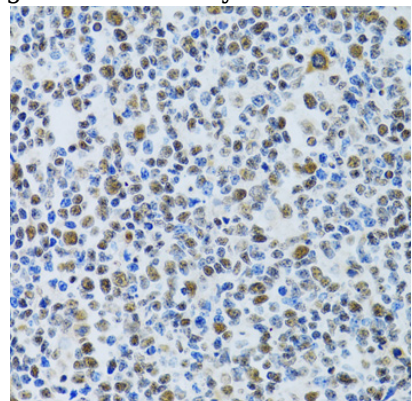
Immunohistochemistry of paraffin-embedded rat kidney using MTA3 antibody at dilution of 1:100



(40x lens).

## Immunohistochemistry - MTA3 Polyclonal Antibody

Immunohistochemistry of paraffin-embedded rat heart using MTA3 antibody at dilution of 1:100



(40x lens).

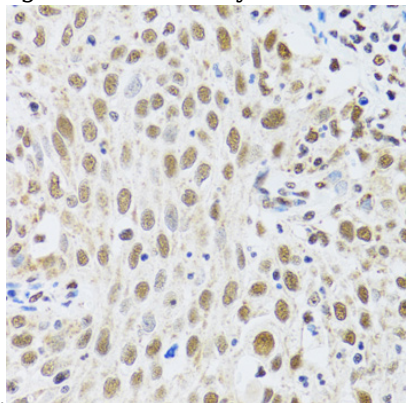
## Immunohistochemistry - MTA3 Polyclonal Antibody



# MTA3 Polyclonal Antibody

Catalog Number: 164972

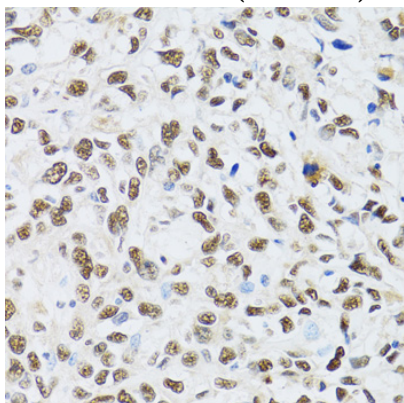
Immunohistochemistry of paraffin-embedded human tonsil using MTA3 antibody at dilution of



1:100 (40x lens).

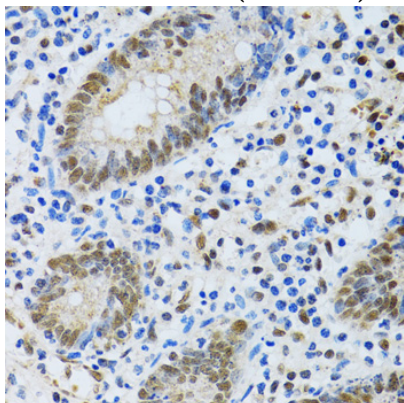
Immunohistochemistry - MTA3 Polyclonal Antibody

Immunohistochemistry of paraffin-embedded human lung cancer using MTA3 antibody at dilution of 1:100 (40x lens).



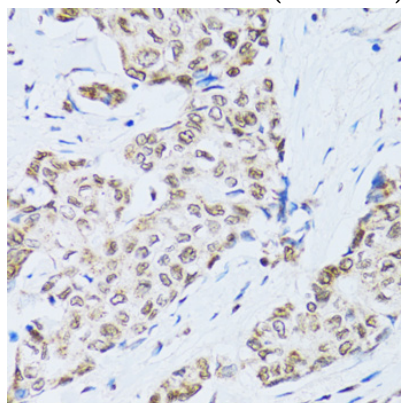
Immunohistochemistry - MTA3 Polyclonal Antibody

Immunohistochemistry of paraffin-embedded human liver cancer using MTA3 antibody at dilution of 1:100 (40x lens).



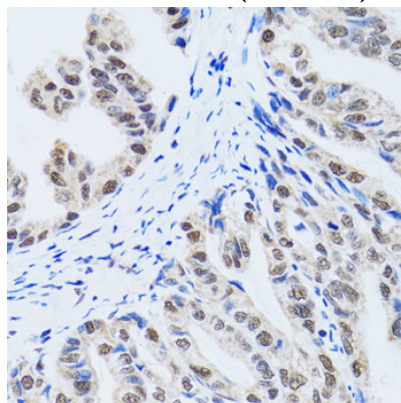
Immunohistochemistry - MTA3 Polyclonal Antibody

Immunohistochemistry of paraffin-embedded human vermiform appendix using MTA3 antibody at dilution of 1:100 (40x lens).



Immunohistochemistry - MTA3 Polyclonal Antibody

Immunohistochemistry of paraffin-embedded human breast cancer using MTA3 antibody at dilution of 1:100 (40x lens).



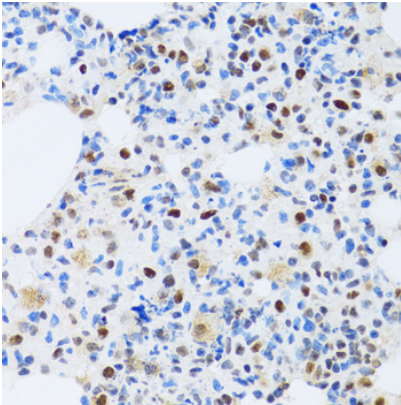
Immunohistochemistry - MTA3 Polyclonal Antibody

Immunohistochemistry of paraffin-embedded human gastric cancer using MTA3 antibody at dilution of 1:100 (40x lens).

# MTA3 Polyclonal Antibody

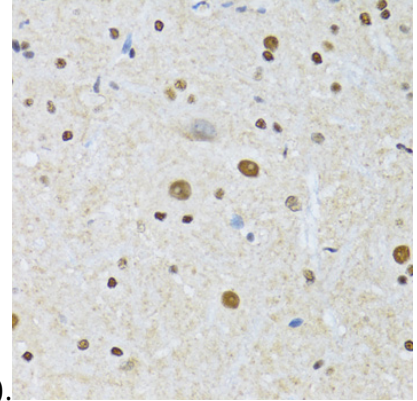


Catalog Number: 164972



Immunohistochemistry of paraffin-embedded mouse testis using MTA3 antibody at dilution of

1:100 (40x lens).

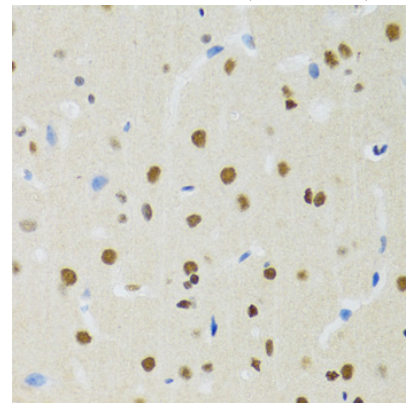


Immunohistochemistry - MTA3 Polyclonal Antibody

Immunohistochemistry of paraffin-embedded mouse lung using MTA3 antibody at dilution of

Immunohistochemistry - MTA3 Polyclonal Antibody

Immunohistochemistry of paraffin-embedded mouse spinal cord using MTA3 antibody at dilution of 1:100 (40x lens).



1:100 (40x lens).

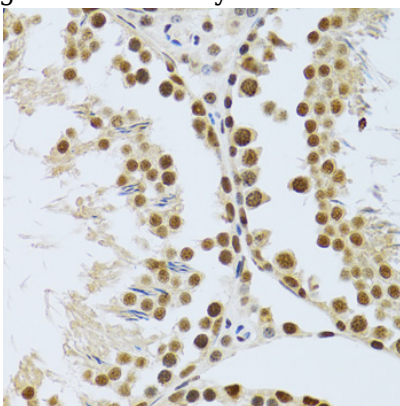
Immunohistochemistry - MTA3 Polyclonal Antibody

Immunohistochemistry of paraffin-embedded mouse liver using MTA3 antibody at dilution of

Immunohistochemistry - MTA3 Polyclonal Antibody

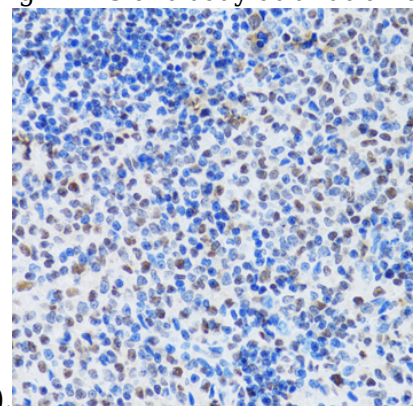
Immunohistochemistry of paraffin-embedded mouse brain using MTA3 antibody at dilution of

1:100 (40x lens).



Immunohistochemistry - MTA3 Polyclonal Antibody

1:100 (40x lens).





# MTA3 Polyclonal Antibody

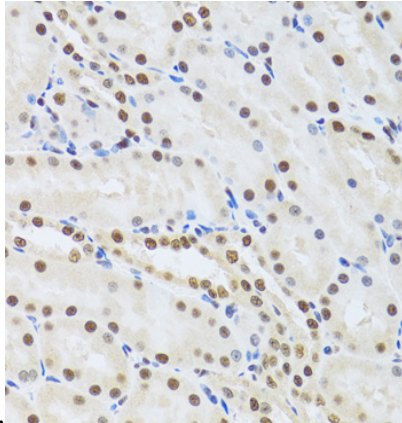


Catalog Number: 164972

---

Immunohistochemistry - MTA3 Polyclonal Antibody

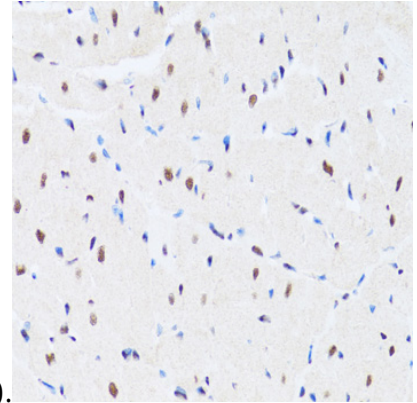
Immunohistochemistry of paraffin-embedded mouse spleen using MTA3 antibody at dilution of



1:100 (40x lens).

Immunohistochemistry - MTA3 Polyclonal Antibody

Immunohistochemistry of paraffin-embedded mouse kidney using MTA3 antibody at dilution of



1:100 (40x lens).

Immunohistochemistry - MTA3 Polyclonal Antibody

Immunohistochemistry of paraffin-embedded mouse heart using MTA3 antibody at dilution of 1:100 (40x lens).