

MAPRE2 Polyclonal Antibody



Catalog Number: 164967

Product name

MAPRE2 Polyclonal Antibody

Specificity

Human, Mouse, Rat

Antibody description

Polyclonal antibody to MAPRE2

Preparation

Antigen: Recombinant fusion protein containing a sequence corresponding to amino acids 1-327 of human MAPRE2 (NP_001137298.1).

Formulation

PBS with 0.02% sodium azide, 50% glycerol, pH7.3.

Storage

Store at -20°C. Avoid freeze / thaw cycles.

Clonality

Polyclonal

Ig Type

Rabbit IgG

Applications

WB, IHC, IF

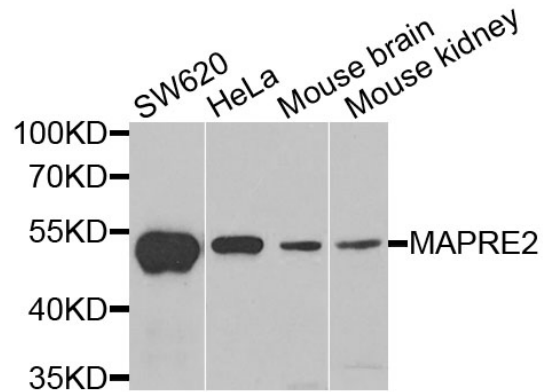
Dilutions

WB 1:500 - 1:2000

IHC 1:50 - 1:200

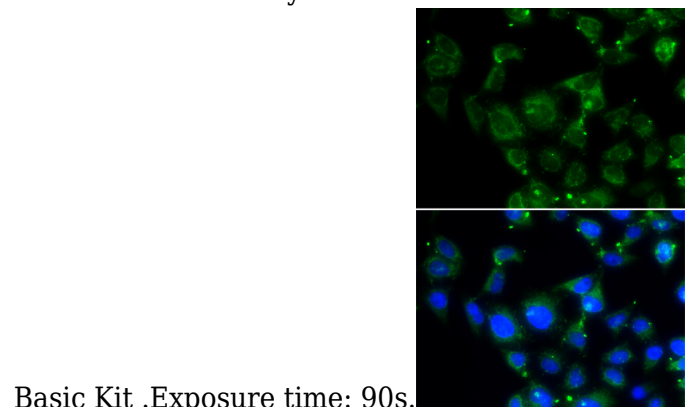
IF 1:50 - 1:100

Validations



Western blot - MAPRE2 Polyclonal Antibody

Western blot analysis of extracts of various cell lines, using MAPRE2 antibody at 1:1000 dilution. Secondary antibody: HRP Goat Anti-Rabbit IgG (H+L) at 1:10000 dilution. Lysates/proteins: 25ug per lane. Blocking buffer: 3% nonfat dry milk in TBST. Detection: ECL



Basic Kit .Exposure time: 90s.

Immunofluorescence - MAPRE2 Polyclonal Antibody

Immunofluorescence analysis of HeLa cells using MAPRE2 antibody . Blue: DAPI for nuclear staining.