

# GMPS Polyclonal Antibody



Catalog Number: 164950

## Product name

GMPS Polyclonal Antibody

## Specificity

Human, Mouse, Rat

## Antibody description

Polyclonal antibody to GMPS

## Preparation

Antigen: Recombinant fusion protein containing a sequence corresponding to amino acids 394-693 of human GMPS (NP\_003866.1).

## Formulation

PBS with 0.02% sodium azide, 50% glycerol, pH7.3.

## Storage

Store at -20°C. Avoid freeze / thaw cycles.

## Clonality

Polyclonal

## Ig Type

Rabbit IgG

## Applications

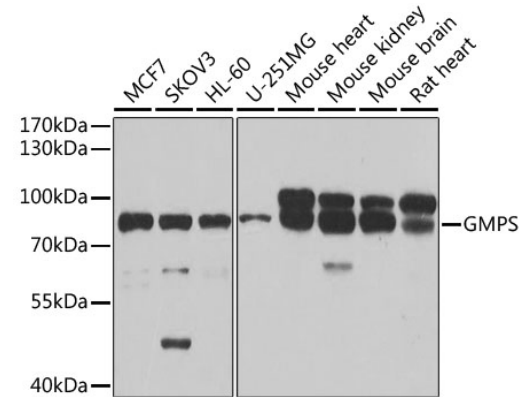
WB, IP

## Dilutions

WB 1:500 - 1:2000

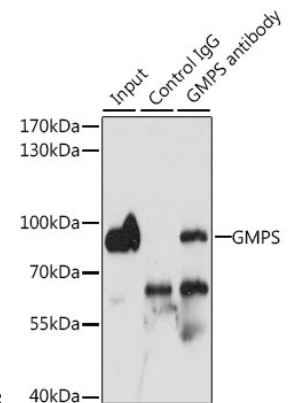
IP 1:50 - 1:100

## Validations



Western blot - GMPS Polyclonal Antibody

Western blot analysis of extracts of various cell lines, using GMPS antibody at 1:1000 dilution. Secondary antibody: HRP Goat Anti-Rabbit IgG (H+L) at 1:10000 dilution. Lysates/proteins: 25ug per lane. Blocking buffer: 3% nonfat dry milk in TBST. Detection: ECL



Basic Kit .Exposure time: 90s.

Immunoprecipitation - GMPS Polyclonal Antibody

Immunoprecipitation analysis of 200ug extracts of MCF-7 cells, using 3 ug GMPS antibody . Western blot was performed from the immunoprecipitate using GMPS antibody at a dilution of 1:1000.