

# UBE3C Polyclonal Antibody



Catalog Number: 164878

## Product name

UBE3C Polyclonal Antibody

## Specificity

Human

## Antibody description

Polyclonal antibody to UBE3C

## Preparation

Antigen: Recombinant fusion protein containing a sequence corresponding to amino acids 1-270 of human UBE3C (NP\_055486.2).

## Formulation

PBS with 0.02% sodium azide, 50% glycerol, pH7.3.

## Storage

Store at -20°C. Avoid freeze / thaw cycles.

## Clonality

Polyclonal

## Ig Type

Rabbit IgG

## Applications

WB, IHC, IF

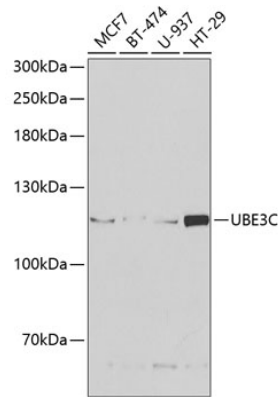
## Dilutions

WB 1:500 - 1:2000

IHC 1:50 - 1:200

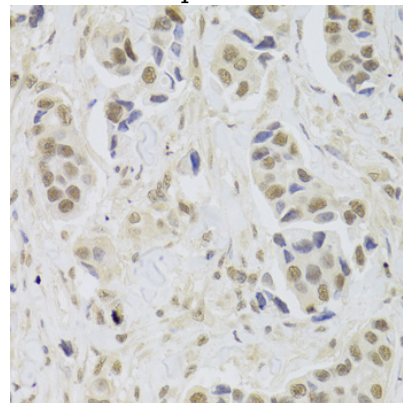
IF 1:10 - 1:100

## Validations



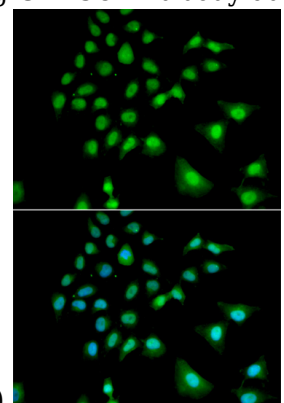
Western blot - UBE3C Polyclonal Antibody

Western blot analysis of extracts of various cell lines, using UBE3C antibody at 1:1000 dilution. Secondary antibody: HRP Goat Anti-Rabbit IgG (H+L) at 1:10000 dilution. Lysates/proteins: 25ug per lane. Blocking buffer: 3% nonfat dry milk in TBST. Detection: ECL Basic Kit. Exposure time: 90s.



Immunohistochemistry - UBE3C Polyclonal Antibody

Immunohistochemistry of paraffin-embedded human breast cancer using UBE3C Antibody at



dilution of 1:100 (40x lens).

# UBE3C Polyclonal Antibody



Catalog Number: 164878

---

Immunofluorescence - UBE3C Polyclonal Antibody

Immunofluorescence analysis of U2OS cells using UBE3C antibody . Blue: DAPI for nuclear staining.