

RCVRN Polyclonal Antibody



Catalog Number: 164856

Product name

RCVRN Polyclonal Antibody

Specificity

Human, Mouse, Rat

Antibody description

Polyclonal antibody to RCVRN

Preparation

Antigen: Recombinant fusion protein containing a sequence corresponding to amino acids 1-200 of human RCVRN (NP_002894.1).

Formulation

PBS with 0.02% sodium azide, 50% glycerol, pH7.3.

Storage

Store at -20°C. Avoid freeze / thaw cycles.

Clonality

Polyclonal

Ig Type

Rabbit IgG

Applications

WB, IHC, IF

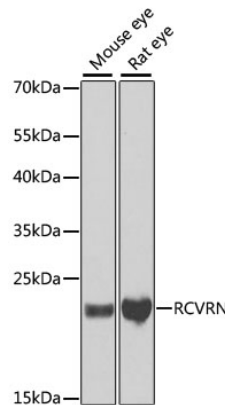
Dilutions

WB 1:500 - 1:2000

IHC 1:50 - 1:200

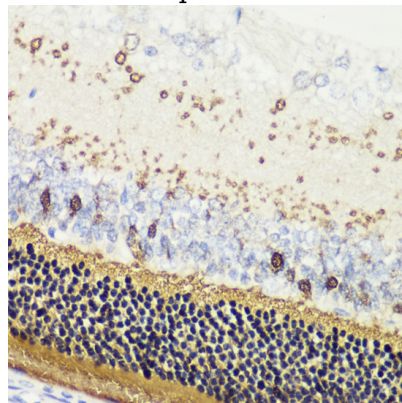
IF 1:10 - 1:100

Validations



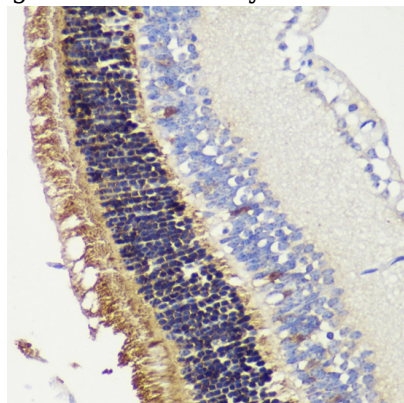
Western blot - RCVRN Polyclonal Antibody

Western blot analysis of extracts of various cell lines, using RCVRN antibody at 1:1000 dilution. Secondary antibody: HRP Goat Anti-Rabbit IgG (H+L) at 1:10000 dilution. Lysates/proteins: 25ug per lane. Blocking buffer: 3% nonfat dry milk in TBST. Detection: ECL Basic Kit. Exposure time: 15s.



Immunohistochemistry - RCVRN Polyclonal Antibody

Immunohistochemistry of paraffin-embedded rat retina using RCVRN antibody at dilution of 1:200



(40x lens).

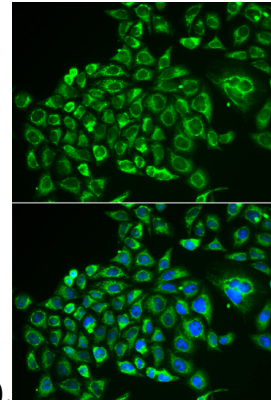
RCVRN Polyclonal Antibody



Catalog Number: 164856

Immunohistochemistry - RCVRN Polyclonal Antibody

Immunohistochemistry of paraffin-embedded mouse retina using RCVRN antibody at dilution of



1:200 (40x lens).

Immunofluorescence - RCVRN Polyclonal Antibody

Immunofluorescence analysis of MCF-7 cells using RCVRN antibody . Blue: DAPI for nuclear staining.