

# MLN Polyclonal Antibody



Catalog Number: 164848

## Product name

MLN Polyclonal Antibody

## Specificity

Human, Mouse

## Antibody description

Polyclonal antibody to MLN

## Preparation

Antigen: Recombinant fusion protein containing a sequence corresponding to amino acids 26-115 of human MLN (NP\_002409.1).

## Formulation

PBS with 0.02% sodium azide, 50% glycerol, pH7.3.

## Storage

Store at -20°C. Avoid freeze / thaw cycles.

## Clonality

Polyclonal

## Ig Type

Rabbit IgG

## Applications

WB, IHC, IF

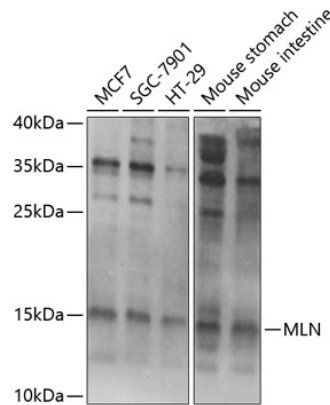
## Dilutions

WB 1:500 - 1:2000

IHC 1:50 - 1:100

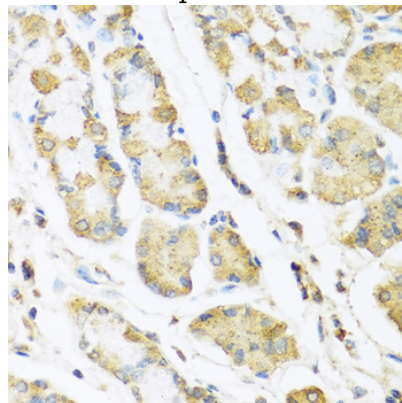
IF 1:50 - 1:100

## Validations



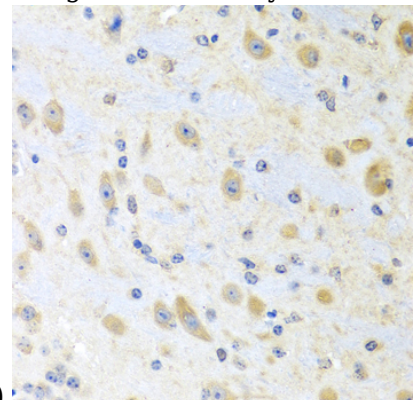
Western blot - MLN Polyclonal Antibody

Western blot analysis of extracts of various cell lines, using MLN Antibody at 1:1000 dilution. Secondary antibody: HRP Goat Anti-Rabbit IgG (H+L) at 1:10000 dilution. Lysates/proteins: 25ug per lane. Blocking buffer: 3% nonfat dry milk in TBST. Detection: ECL Basic Kit. Exposure time: 1s.



Immunohistochemistry - MLN Polyclonal Antibody

Immunohistochemistry of paraffin-embedded human stomach using MLN antibody at dilution of



1:100 (40x lens).

# MLN Polyclonal Antibody

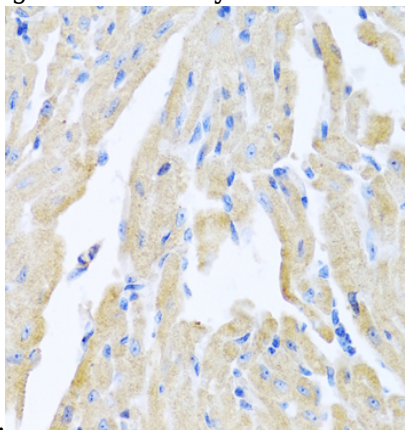


Catalog Number: 164848

---

Immunohistochemistry - MLN Polyclonal Antibody

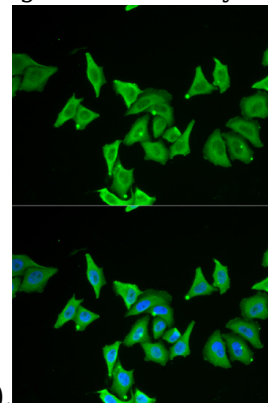
Immunohistochemistry of paraffin-embedded mouse brain using MLN antibody at dilution of



1:100 (40x lens).

Immunohistochemistry - MLN Polyclonal Antibody

Immunohistochemistry of paraffin-embedded mouse heart using MLN antibody at dilution of



1:100 (40x lens).

Immunofluorescence - MLN Polyclonal Antibody

Immunofluorescence analysis of U2OS cells using MLN antibody . Blue: DAPI for nuclear staining.