

# SLC26A2 Polyclonal Antibody



Catalog Number: 164840

---

## Product name

SLC26A2 Polyclonal Antibody

## Specificity

Human

## Antibody description

Polyclonal antibody to SLC26A2

## Preparation

Antigen: Recombinant fusion protein containing a sequence corresponding to amino acids 540-739 of human SLC26A2 (NP\_000103.2).

## Formulation

PBS with 0.02% sodium azide, 50% glycerol, pH7.3.

## Storage

Store at -20°C. Avoid freeze / thaw cycles.

## Clonality

Polyclonal

## Ig Type

Rabbit IgG

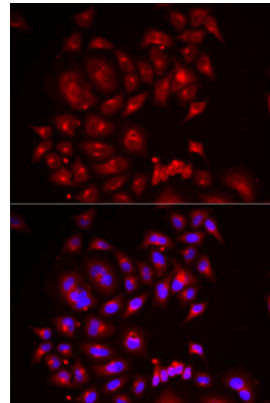
## Applications

IF

## Dilutions

IF 1:50 - 1:100

## Validations



Immunofluorescence - SLC26A2 Polyclonal Antibody

Immunofluorescence analysis of MCF7 cells using SLC26A2 antibody . Blue: DAPI for nuclear staining.