

# PCGF1 Polyclonal Antibody

Catalog Number: 164822

## Product name

PCGF1 Polyclonal Antibody

## Specificity

Human, Mouse

## Antibody description

Polyclonal antibody to PCGF1

## Preparation

Antigen: Recombinant fusion protein containing a sequence corresponding to amino acids 20-259 of human PCGF1 (NP\_116062.2).

## Formulation

PBS with 0.02% sodium azide, 50% glycerol, pH7.3.

## Storage

Store at -20°C. Avoid freeze / thaw cycles.

## Clonality

Polyclonal

## Ig Type

Rabbit IgG

## Applications

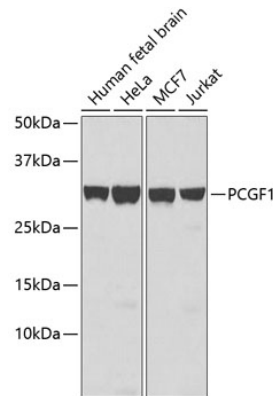
WB, IF

## Dilutions

WB 1:500 - 1:2000

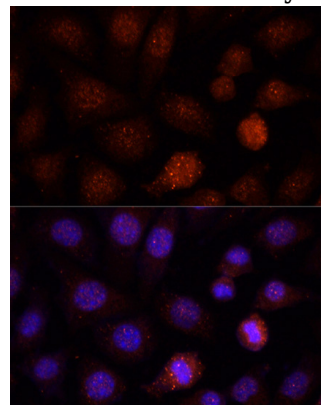
IF 1:50 - 1:200

## Validations



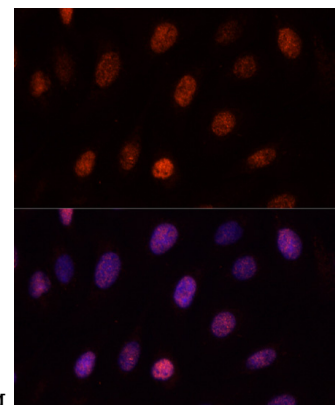
Western blot - PCGF1 Polyclonal Antibody

Western blot analysis of extracts of various cell lines, using PCGF1 antibody. Secondary antibody: HRP Goat Anti-Rabbit IgG (H+L) at 1:10000 dilution. Lysates/proteins: 25ug per lane. Blocking buffer: 3% nonfat dry milk in TBST.



Immunofluorescence - PCGF1 Polyclonal Antibody

Immunofluorescence analysis of L-929 cells using PCGF1 antibody at dilution of 1:100. Blue: DAPI



for nuclear staining.

Immunofluorescence - PCGF1 Polyclonal Antibody

# PCGF1 Polyclonal Antibody



Catalog Number: 164822

---

Immunofluorescence analysis of U-2OS cells using PCGF1 antibody at dilution of 1:100. Blue: DAPI for nuclear staining.