

MAP3K5 Polyclonal Antibody



Catalog Number: 164794

Product name

MAP3K5 Polyclonal Antibody

Specificity

Human, Mouse, Rat

Antibody description

Polyclonal antibody to MAP3K5

Preparation

Antigen: A synthetic peptide of human MAP3K5

Formulation

PBS with 0.02% sodium azide, 50% glycerol, pH7.3.

Storage

Store at -20°C. Avoid freeze / thaw cycles.

Clonality

Polyclonal

Ig Type

Rabbit IgG

Applications

WB, IHC, IF

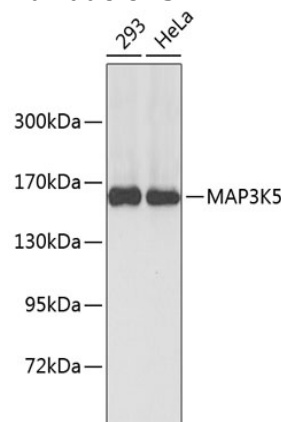
Dilutions

WB 1:500 - 1:1000

IHC 1:50 - 1:100

IF 1:20 - 1:100

Validations



Western blot - MAP3K5 Polyclonal Antibody

Western blot analysis of extracts of various cell lines, using MAP3K5 antibody. Secondary antibody: HRP Goat Anti-Rabbit IgG (H+L) at 1:10000 dilution. Lysates/proteins: 25ug per lane. Blocking buffer: 3% nonfat dry milk in TBST.