

OAT Polyclonal Antibody



Catalog Number: 164778

Product name

OAT Polyclonal Antibody

Specificity

Human, Mouse, Rat

Antibody description

Polyclonal antibody to OAT

Preparation

Antigen: Recombinant fusion protein containing a sequence corresponding to amino acids 160-439 of human OAT (NP_000265.1).

Formulation

PBS with 0.02% sodium azide, 50% glycerol, pH7.3.

Storage

Store at -20°C. Avoid freeze / thaw cycles.

Clonality

Polyclonal

Ig Type

Rabbit IgG

Applications

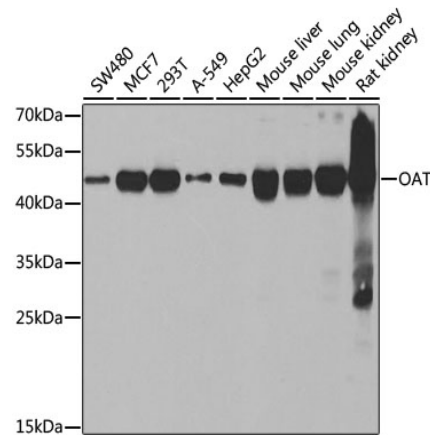
WB, IP

Dilutions

WB 1:500 - 1:2000

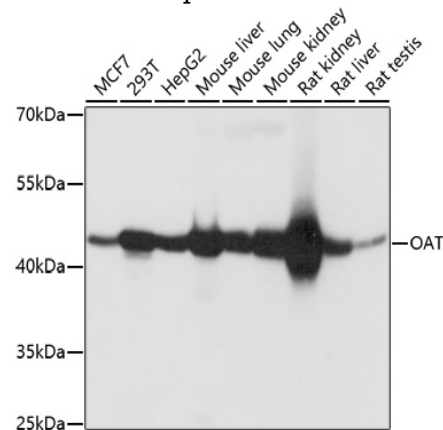
IP 1:50 - 1:100

Validations



Western blot - OAT Polyclonal Antibody

Western blot analysis of extracts of various cell lines, using OAT antibody at 1:1000 dilution. Secondary antibody: HRP Goat Anti-Rabbit IgG (H+L) at 1:10000 dilution. Lysates/proteins: 25ug per lane. Blocking buffer: 3% nonfat dry milk in TBST. Detection: ECL Basic Kit. Exposure time: 10s.



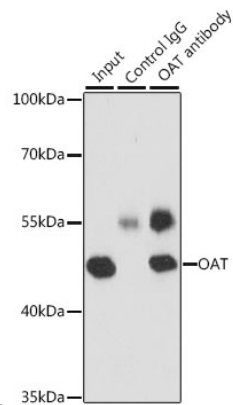
Western blot - OAT Polyclonal Antibody

Western blot analysis of extracts of various cells, using OAT antibody at 1:1000 dilution ratio through one-step method. Secondary antibody: HRP Goat Anti-Rabbit IgG (H+L) at 1:10000 dilution. Lysates/proteins: 25ug per lane. Blocking buffer: 3% nonfat dry milk in TBST. Detection: ECL

OAT Polyclonal Antibody



Catalog Number: 164778



Basic Kit .Exposure time: 10s.

Immunoprecipitation - OAT Polyclonal Antibody

Immunoprecipitation analysis of 200ug extracts of MCF-7 cells, using 3 ug OAT antibody . Western blot was performed from the immunoprecipitate using OAT antibody at a dilution of 1:1000.