

# HAT1 Polyclonal Antibody

Catalog Number: 164761

## Product name

HAT1 Polyclonal Antibody

## Specificity

Human, Mouse, Rat

## Antibody description

Polyclonal antibody to HAT1

## Preparation

Antigen: Recombinant fusion protein containing a sequence corresponding to amino acids 245-419 of human HAT1 (NP\_003633.1).

## Formulation

PBS with 0.02% sodium azide, 50% glycerol, pH7.3.

## Storage

Store at -20°C. Avoid freeze / thaw cycles.

## Clonality

Polyclonal

## Ig Type

Rabbit IgG

## Applications

WB, IHC, IF, ChIP

## Dilutions

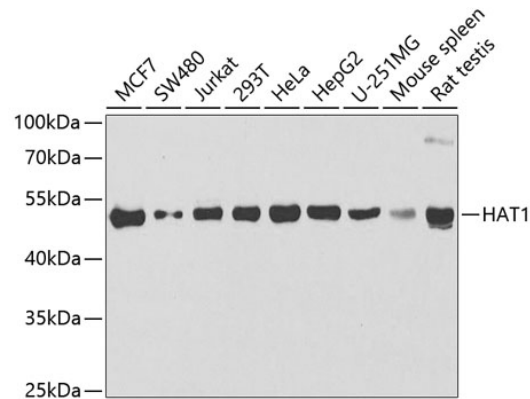
WB 1:500 - 1:2000

IHC 1:50 - 1:200

IF 1:50 - 1:200

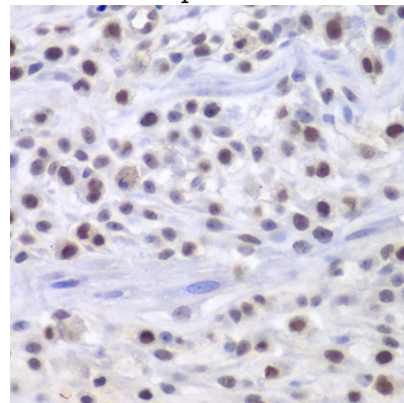
ChIP 1:50 - 1:200

## Validations



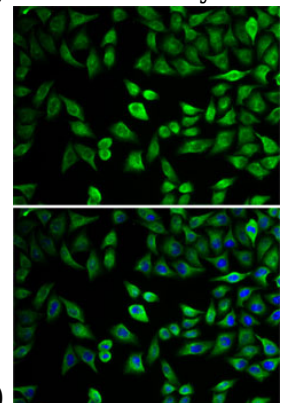
Western blot - HAT1 Polyclonal Antibody

Western blot analysis of extracts of various cell lines, using HAT1 antibody at 1:1000 dilution. Secondary antibody: HRP Goat Anti-Rabbit IgG (H+L) at 1:10000 dilution. Lysates/proteins: 25ug per lane. Blocking buffer: 3% nonfat dry milk in TBST. Detection: ECL Basic Kit. Exposure time: 30s.



Immunohistochemistry - HAT1 Polyclonal Antibody

Immunohistochemistry of paraffin-embedded mouse osteosarcoma using HAT1 antibody at



dilution of 1:200 (40x lens).

# HAT1 Polyclonal Antibody



Catalog Number: 164761

---

Immunofluorescence - HAT1 Polyclonal Antibody

Immunofluorescence analysis of U2OS cells using HAT1 antibody . Blue: DAPI for nuclear staining.