

# SCNN1G Polyclonal Antibody



Catalog Number: 164735

## Product name

SCNN1G Polyclonal Antibody

## Specificity

Human, Mouse

## Antibody description

Polyclonal antibody to SCNN1G

## Preparation

Antigen: Recombinant fusion protein containing a sequence corresponding to amino acids 85-355 of human SCNN1G (NP\_001030.2).

## Formulation

PBS with 0.02% sodium azide, 50% glycerol, pH7.3.

## Storage

Store at -20°C. Avoid freeze / thaw cycles.

## Clonality

Polyclonal

## Ig Type

Rabbit IgG

## Applications

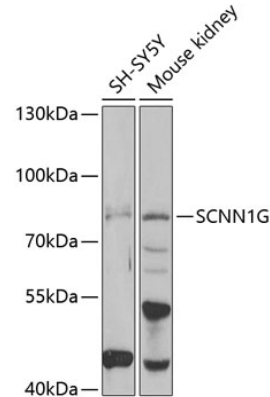
WB, IHC

## Dilutions

WB 1:500 - 1:1000

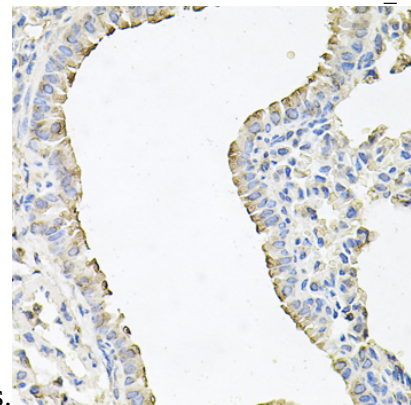
IHC 1:50 - 1:100

## Validations



Western blot - SCNN1G Polyclonal Antibody

Western blot analysis of extracts of various cell lines, using SCNN1G antibody at 1:1000 dilution. Secondary antibody: HRP Goat Anti-Rabbit IgG (H+L) at 1:10000 dilution. Lysates/proteins: 25ug per lane. Blocking buffer: 3% nonfat dry milk in TBST. Detection: ECL Enhanced Kit. Exposure



time: 60s.

Immunohistochemistry - SCNN1G Polyclonal Antibody

Immunohistochemistry of paraffin-embedded mouse lung using SCNN1G antibody at dilution of 1:100 (40x lens).