

KHDRBS2 Polyclonal Antibody



Catalog Number: 164728

Product name

KHDRBS2 Polyclonal Antibody

Specificity

Human

Antibody description

Polyclonal antibody to KHDRBS2

Preparation

Antigen: A synthetic peptide corresponding to a sequence within amino acids 200 to the C-terminus of human KHDRBS2 (NP_689901.2).

Formulation

PBS with 0.02% sodium azide, 50% glycerol, pH7.3.

Storage

Store at -20°C. Avoid freeze / thaw cycles.

Clonality

Polyclonal

Ig Type

Rabbit IgG

Applications

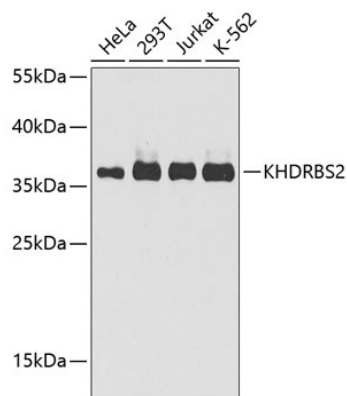
WB, IHC

Dilutions

WB 1:500 - 1:1000

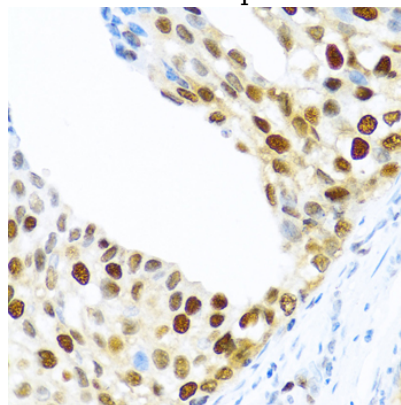
IHC 1:100 - 1:200

Validations



Western blot - KHDRBS2 Polyclonal Antibody

Western blot analysis of extracts of various cell lines, using KHDRBS2 antibody at 1:1000 dilution. Secondary antibody: HRP Goat Anti-Rabbit IgG (H+L) at 1:10000 dilution. Lysates/proteins: 25ug per lane. Blocking buffer: 3% nonfat dry milk in TBST. Detection: ECL Enhanced Kit. Exposure time: 30s.



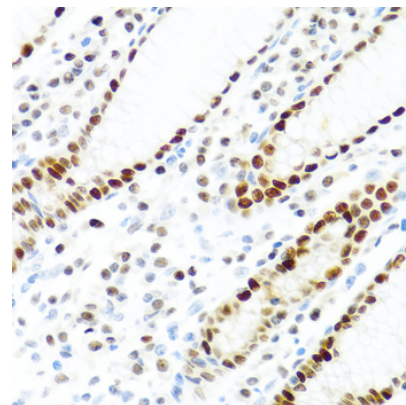
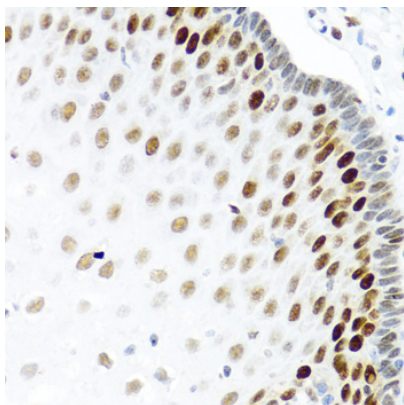
Immunohistochemistry - KHDRBS2 Polyclonal Antibody

Immunohistochemistry of paraffin-embedded human prostate cancer using KHDRBS2 antibody at dilution of 1:100 (40x lens).

KHDRBS2 Polyclonal Antibody



Catalog Number: 164728



Immunohistochemistry - KHDRBS2 Polyclonal Antibody

Immunohistochemistry - KHDRBS2 Polyclonal Antibody

Immunohistochemistry of paraffin-embedded human esophagus using KHDRBS2 antibody at dilution of 1:100 (40x lens).

Immunohistochemistry of paraffin-embedded human stomach using KHDRBS2 antibody at dilution of 1:100 (40x lens).