

# NCL Polyclonal Antibody

Catalog Number: 164686

## Product name

NCL Polyclonal Antibody

## Specificity

Human, Mouse, Rat

## Antibody description

Polyclonal antibody to NCL

## Preparation

Antigen: Recombinant fusion protein containing a sequence corresponding to amino acids 461-710 of human NCL (NP\_005372.2).

## Formulation

PBS with 0.02% sodium azide, 50% glycerol, pH7.3.

## Storage

Store at -20°C. Avoid freeze / thaw cycles.

## Clonality

Polyclonal

## Ig Type

Rabbit IgG

## Applications

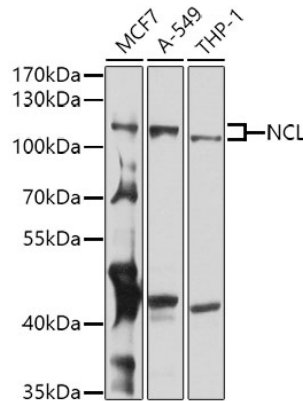
WB, IHC

## Dilutions

WB 1:500 - 1:2000

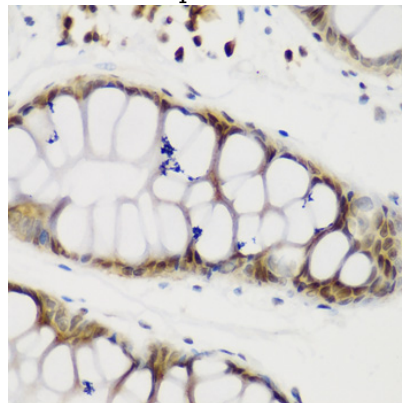
IHC 1:50 - 1:200

## Validations



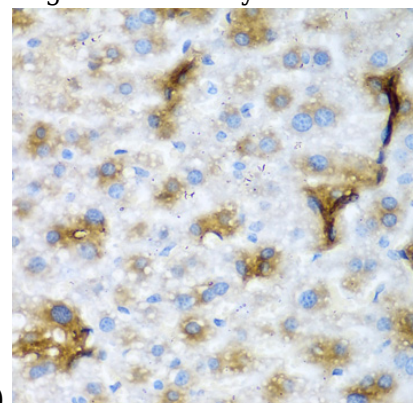
Western blot - NCL Polyclonal Antibody

Western blot analysis of extracts of various cell lines, using NCL antibody at 1:1000 dilution. Secondary antibody: HRP Goat Anti-Rabbit IgG (H+L) at 1:10000 dilution. Lysates/proteins: 25ug per lane. Blocking buffer: 3% nonfat dry milk in TBST. Detection: ECL Basic Kit. Exposure time: 30s.



Immunohistochemistry - NCL Polyclonal Antibody

Immunohistochemistry of paraffin-embedded human gastric using NCL antibody at dilution of



1:200 (40x lens).

# NCL Polyclonal Antibody

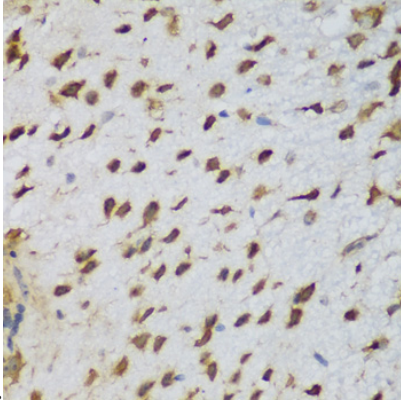


Catalog Number: 164686

---

## Immunohistochemistry - NCL Polyclonal Antibody

Immunohistochemistry of paraffin-embedded mouse liver using NCL antibody at dilution of



1:200 (40x lens).

## Immunohistochemistry - NCL Polyclonal Antibody

Immunohistochemistry of paraffin-embedded mouse brain using NCL antibody at dilution of 1:200 (40x lens).