

# APEH Polyclonal Antibody



Catalog Number: 164682

## Product name

APEH Polyclonal Antibody

## Specificity

Human, Mouse, Rat

## Antibody description

Polyclonal antibody to APEH

## Preparation

Antigen: Recombinant fusion protein containing a sequence corresponding to amino acids 1-260 of human APEH (NP\_001631.3).

## Formulation

PBS with 0.02% sodium azide, 50% glycerol, pH7.3.

## Storage

Store at -20°C. Avoid freeze / thaw cycles.

## Clonality

Polyclonal

## Ig Type

Rabbit IgG

## Applications

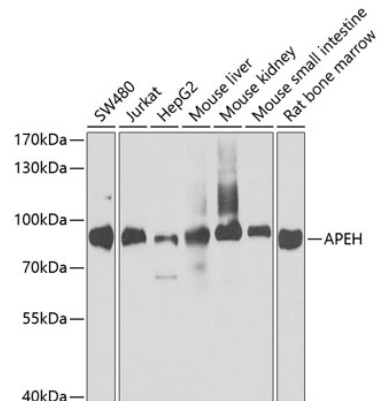
WB, IP

## Dilutions

WB 1:500 - 1:2000

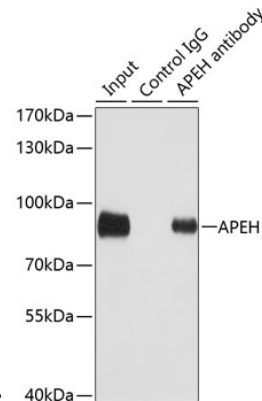
IP 1:20 - 1:50

## Validations



## Western blot - APEH Polyclonal Antibody

Western blot analysis of extracts of various cell lines, using APEH antibody at 1:1000 dilution. Secondary antibody: HRP Goat Anti-Rabbit IgG (H+L) at 1:10000 dilution. Lysates/proteins: 25ug per lane. Blocking buffer: 3% nonfat dry milk in TBST. Detection: ECL



Basic Kit .Exposure time: 30s.

## Immunoprecipitation - APEH Polyclonal Antibody

Immunoprecipitation analysis of 100ug extracts of SW480 cells using 3ug APEH antibody . Western blot was performed from the immunoprecipitate using APEH antibody at a dilution of 1:1000.