

RPS3A Polyclonal Antibody



Catalog Number: 164680

Product name

RPS3A Polyclonal Antibody

Specificity

Human, Mouse, Rat

Antibody description

Polyclonal antibody to RPS3A

Preparation

Antigen: Recombinant fusion protein containing a sequence corresponding to amino acids 1-264 of human RPS3A (NP_000997.1).

Formulation

PBS with 0.02% sodium azide, 50% glycerol, pH7.3.

Storage

Store at -20°C. Avoid freeze / thaw cycles.

Clonality

Polyclonal

Ig Type

Rabbit IgG

Applications

WB, IHC, IF, IP

Dilutions

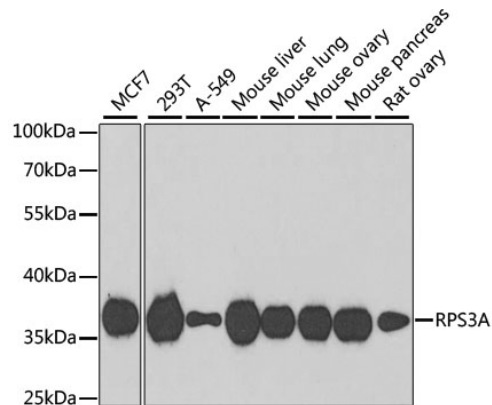
WB 1:500 - 1:2000

IHC 1:50 - 1:200

IF 1:50 - 1:200

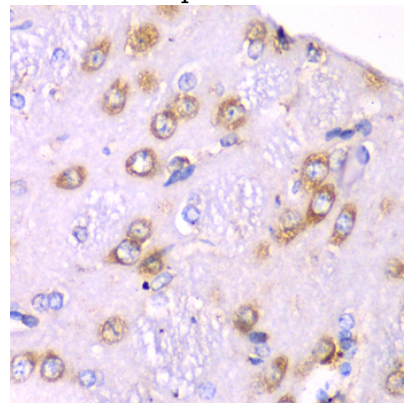
IP 1:50 - 1:100

Validations



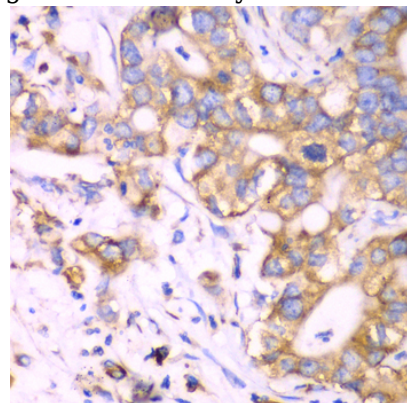
Western blot - RPS3A Polyclonal Antibody

Western blot analysis of extracts of various cell lines, using RPS3A antibody at 1:1000 dilution. Secondary antibody: HRP Goat Anti-Rabbit IgG (H+L) at 1:10000 dilution. Lysates/proteins: 25ug per lane. Blocking buffer: 3% nonfat dry milk in TBST. Detection: ECL Basic Kit. Exposure time: 90s.



Immunohistochemistry - RPS3A Polyclonal Antibody

Immunohistochemistry of paraffin-embedded rat brain using RPS3A Antibody at dilution of 1:100



(40x lens).

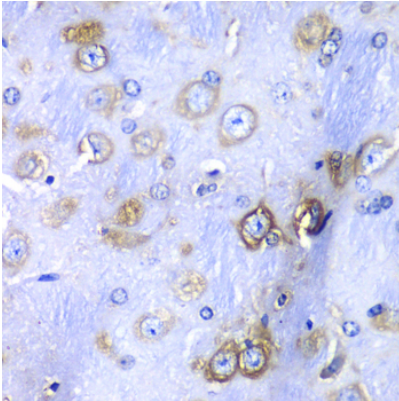
RPS3A Polyclonal Antibody



Catalog Number: 164680

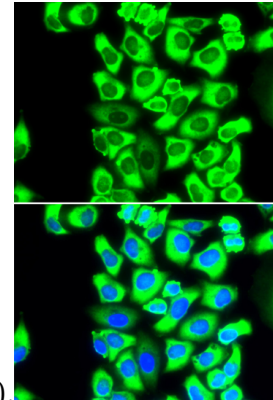
Immunohistochemistry - RPS3A Polyclonal Antibody

Immunohistochemistry of paraffin-embedded human liver cancer using RPS3A Antibody at dilution of 1:100 (40x lens).



Immunohistochemistry - RPS3A Polyclonal Antibody

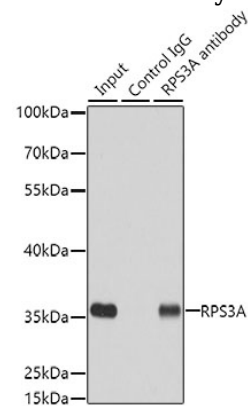
Immunohistochemistry of paraffin-embedded mouse brain using RPS3A Antibody at dilution of



1:100 (40x lens).

Immunofluorescence - RPS3A Polyclonal Antibody

Immunofluorescence analysis of MCF-7 cells using RPS3A antibody . Blue: DAPI for nuclear staining.



Immunoprecipitation - RPS3A Polyclonal Antibody

Immunoprecipitation analysis of 200ug extracts of MCF7 cells using 3ug RPS3A antibody . Western blot was performed from the immunoprecipitate using RPS3A antibody at a dilution of 1:500.