

Pan DiMethyl-lysine pAb

Catalog Number: 164674

Product name

Pan DiMethyl-lysine pAb

Specificity

Human, Mouse, Rat, Other (Wide Range)

Antibody description

Polyclonal antibody to Pan DiMethyl-lysine

Preparation

Antigen: A synthetic peptide corresponding to a sequence containing dimethylated K.

Formulation

PBS with 0.02% sodium azide, 50% glycerol, pH7.3.

Storage

Store at -20°C. Avoid freeze / thaw cycles.

Clonality

Polyclonal

Ig Type

Rabbit IgG

Applications

WB, IHC, IF, IP

Dilutions

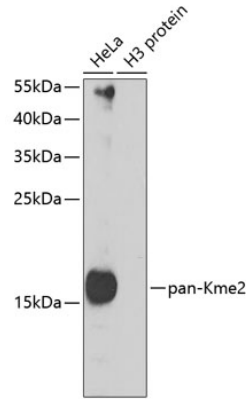
WB 1:500 - 1:2000

IHC 1:50 - 1:100

IF 1:50 - 1:100

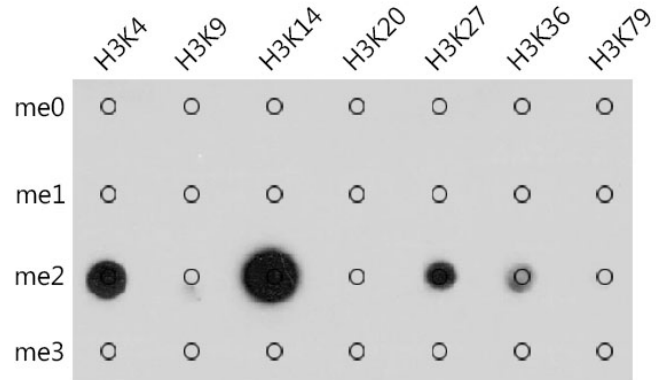
IP 1:50 - 1:100

Validations



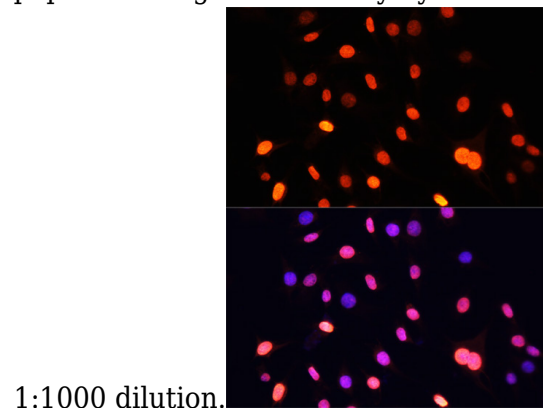
Western blot - Pan DiMethyl-lysine pAb

Western blot analysis of extracts of various cell lines, using pan-Kme2 antibody at 1:1000 dilution. Secondary antibody: HRP Goat Anti-Rabbit IgG (H+L) at 1:10000 dilution. Lysates/proteins: 25ug per lane. Blocking buffer: 3% nonfat dry milk in TBST.



Dot Blot - Pan DiMethyl-lysine pAb

Dot-blot analysis of all sorts of methylation peptides using Pan DiMethyl-lysine antibody at



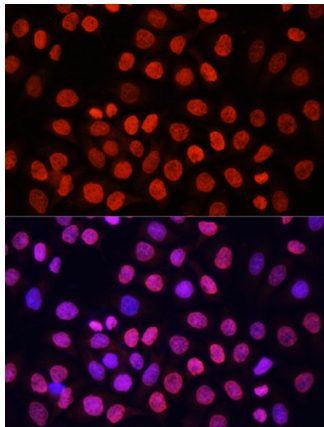
1:1000 dilution.

Immunofluorescence - Pan DiMethyl-lysine pAb

Pan DiMethyl-lysine pAb

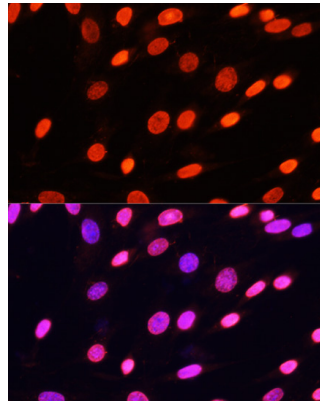
Catalog Number: 164674

Immunofluorescence analysis of C6 cells using Pan DiMethyl-lysine antibody at dilution of 1:100. Blue: DAPI for nuclear staining.



Immunofluorescence - Pan DiMethyl-lysine pAb
Immunofluorescence analysis of HeLa cells using

Pan DiMethyl-lysine antibody at dilution of 1:100. Blue: DAPI for nuclear staining.



Immunofluorescence - Pan DiMethyl-lysine pAb

Immunofluorescence analysis of NIH/3T3 cells using Pan DiMethyl-lysine antibody at dilution of 1:100. Blue: DAPI for nuclear staining.