

SLC25A13 Polyclonal Antibody



Catalog Number: 164667

Product name

SLC25A13 Polyclonal Antibody

Specificity

Human, Mouse

Antibody description

Polyclonal antibody to SLC25A13

Preparation

Antigen: Recombinant fusion protein containing a sequence corresponding to amino acids 1-300 of human SLC25A13 (NP_001153682.1).

Formulation

PBS with 0.02% sodium azide, 50% glycerol, pH7.3.

Storage

Store at -20°C. Avoid freeze / thaw cycles.

Clonality

Polyclonal

Ig Type

Rabbit IgG

Applications

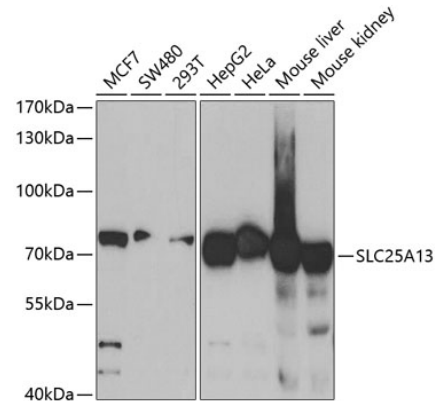
WB, IHC

Dilutions

WB 1:500 - 1:2000

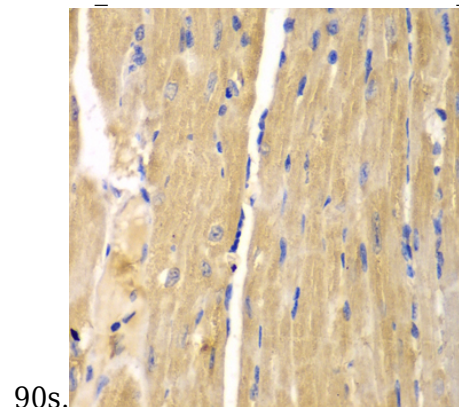
IHC 1:50 - 1:200

Validations



Western blot - SLC25A13 Polyclonal Antibody

Western blot analysis of extracts of various cell lines, using SLC25A13 antibody at 1:1000 dilution. Secondary antibody: HRP Goat Anti-Rabbit IgG (H+L) at 1:10000 dilution. Lysates/proteins: 25ug per lane. Blocking buffer: 3% nonfat dry milk in TBST. Detection: ECL Basic Kit. Exposure time:



90s.

Immunohistochemistry - SLC25A13 Polyclonal Antibody

Immunohistochemistry of paraffin-embedded mouse heart using SLC25A13 antibody at dilution of 1:200 (40x lens).