

# MRPS30 Polyclonal Antibody



Catalog Number: 164661

## Product name

MRPS30 Polyclonal Antibody

## Specificity

Human, Mouse, Rat

## Antibody description

Polyclonal antibody to MRPS30

## Preparation

Antigen: Recombinant fusion protein containing a sequence corresponding to amino acids 190-439 of human MRPS30 (NP\_057724.2).

## Formulation

PBS with 0.02% sodium azide, 50% glycerol, pH7.3.

## Storage

Store at -20°C. Avoid freeze / thaw cycles.

## Clonality

Polyclonal

## Ig Type

Rabbit IgG

## Applications

WB, IHC, IF, IP

## Dilutions

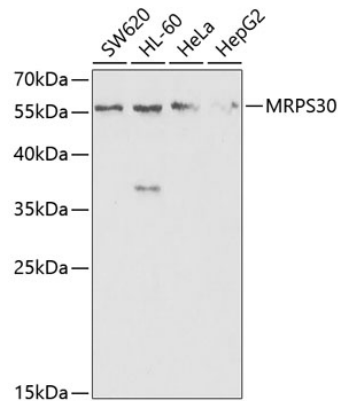
WB 1:500 - 1:2000

IHC 1:50 - 1:200

IF 1:50 - 1:100

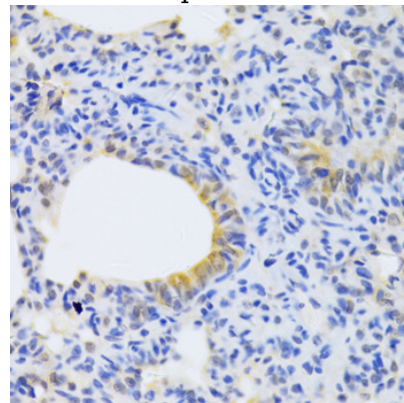
IP 1:50 - 1:200

## Validations



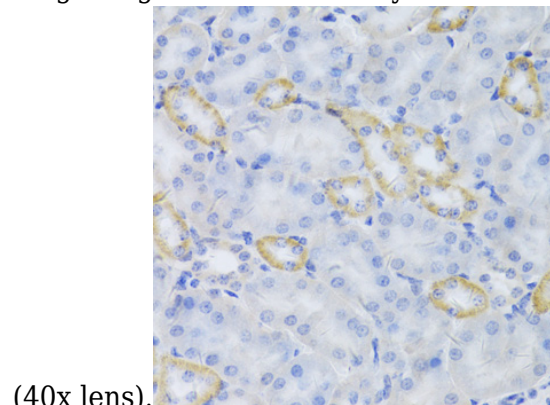
Western blot - MRPS30 Polyclonal Antibody

Western blot analysis of extracts of various cell lines, using MRPS30 antibody at 1:1000 dilution. Secondary antibody: HRP Goat Anti-Rabbit IgG (H+L) at 1:10000 dilution. Lysates/proteins: 25ug per lane. Blocking buffer: 3% nonfat dry milk in TBST. Detection: ECL Basic Kit. Exposure time: 90s.



Immunohistochemistry - MRPS30 Polyclonal Antibody

Immunohistochemistry of paraffin-embedded rat lung using MRPS30 Antibody at dilution of 1:100



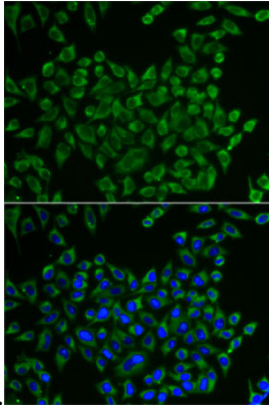
# MRPS30 Polyclonal Antibody



Catalog Number: 164661

Immunohistochemistry - MRPS30 Polyclonal Antibody

Immunohistochemistry of paraffin-embedded mouse kidney using MRPS30 Antibody at dilution

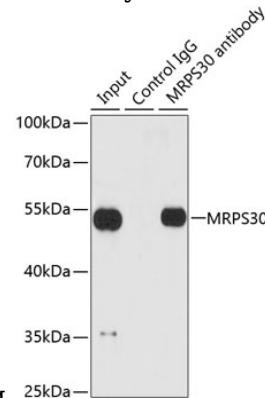


of 1:100 (40x lens).

Immunofluorescence - MRPS30 Polyclonal Antibody

Immunofluorescence analysis of U2OS cells using

MRPS30 antibody . Blue: DAPI for nuclear



staining.

Immunoprecipitation - MRPS30 Polyclonal Antibody

Immunoprecipitation analysis of 200ug extracts of HepG2 cells using 1ug MRPS30 antibody . Western blot was performed from the immunoprecipitate using MRPS30 antibody at a dilution of 1:1000.