

KDM4B Polyclonal Antibody



Catalog Number: 164653

Product name

KDM4B Polyclonal Antibody

Specificity

Human, Mouse, Rat

Antibody description

Polyclonal antibody to KDM4B

Preparation

Antigen: Recombinant fusion protein containing a sequence corresponding to amino acids 1-260 of human KDM4B (NP_055830.1).

Formulation

PBS with 0.02% sodium azide, 50% glycerol, pH7.3.

Storage

Store at -20°C. Avoid freeze / thaw cycles.

Clonality

Polyclonal

Ig Type

Rabbit IgG

Applications

WB, IHC, IF

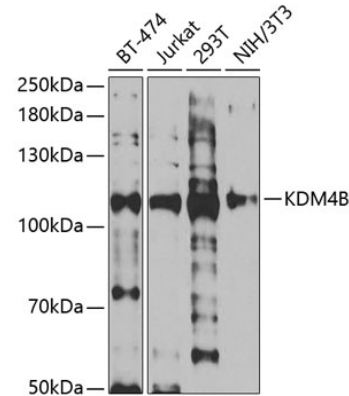
Dilutions

WB 1:500 - 1:2000

IHC 1:50 - 1:200

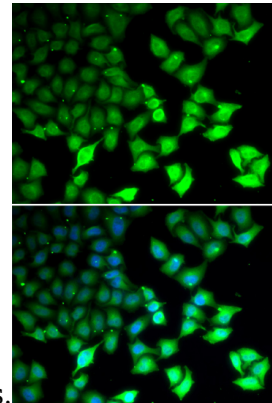
IF 1:50 - 1:200

Validations



Western blot - KDM4B Polyclonal Antibody

Western blot analysis of extracts of various cell lines, using KDM4B antibody at 1:1000 dilution. Secondary antibody: HRP Goat Anti-Rabbit IgG (H+L) at 1:10000 dilution. Lysates/proteins: 25ug per lane. Blocking buffer: 3% nonfat dry milk in TBST. Detection: ECL Enhanced Kit. Exposure



time: 60s.

Immunofluorescence - KDM4B Polyclonal Antibody

Immunofluorescence analysis of U2OS cells using KDM4B antibody. Blue: DAPI for nuclear staining.