

# BTAf1 Polyclonal Antibody

Catalog Number: 164646

## Product name

BTAf1 Polyclonal Antibody

## Specificity

Human, Mouse, Rat

## Antibody description

Polyclonal antibody to BTAf1

## Preparation

Antigen: Recombinant fusion protein containing a sequence corresponding to amino acids 1600-1849 of human BTAf1 (NP\_003963.1).

## Formulation

PBS with 0.02% sodium azide, 50% glycerol, pH7.3.

## Storage

Store at -20°C. Avoid freeze / thaw cycles.

## Clonality

Polyclonal

## Ig Type

Rabbit IgG

## Applications

WB, IHC, IP, ChIP

## Dilutions

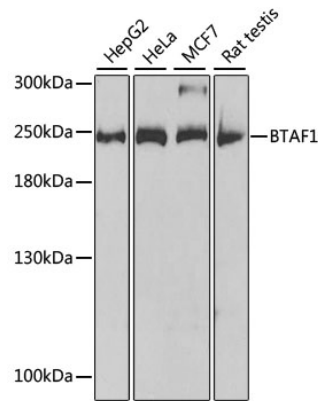
WB 1:500 - 1:2000

IHC 1:50 - 1:200

IP 1:20 - 1:50

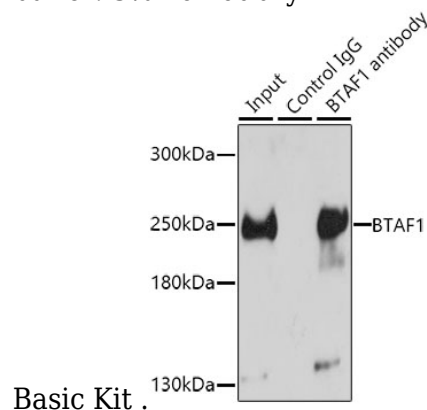
ChIP 1:20 - 1:100

## Validations



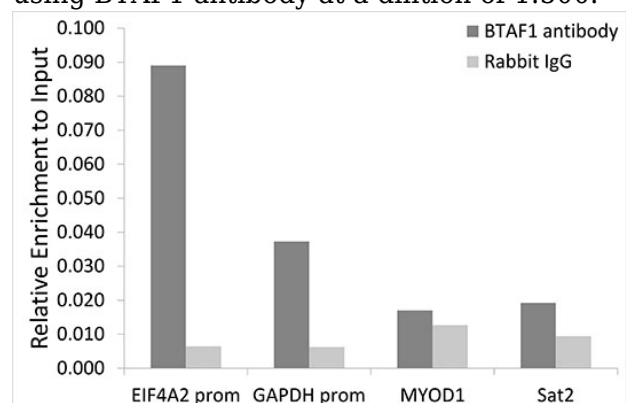
## Western blot - BTAf1 Polyclonal Antibody

Western blot analysis of extracts of various cell lines, using BTAf1 antibody at 1:1000 dilution. Secondary antibody: HRP Goat Anti-Rabbit IgG (H+L) at 1:10000 dilution. Lysates/proteins: 25ug per lane. Blocking buffer: 3% nonfat dry milk in TBST. Detection: ECL



## Immunoprecipitation - BTAf1 Polyclonal Antibody

Immunoprecipitation analysis of 150ug extracts of HeLa cells using 3ug BTAf1 antibody. Western blot was performed from the immunoprecipitate using BTAf1 antibody at a dilution of 1:500.



# BTAf1 Polyclonal Antibody



Catalog Number: 164646

---

Chromatin Immunoprecipitation - BTAf1  
Polyclonal Antibody

Chromatin immunoprecipitation analysis of  
extracts of HeLa cells, using BTAf1 antibody and

rabbit IgG. The amount of immunoprecipitated  
DNA was checked by quantitative PCR. Histogram  
was constructed by the ratios of the  
immunoprecipitated DNA to the input.