

STX1A Polyclonal Antibody



Catalog Number: 164558

Product name

STX1A Polyclonal Antibody

Specificity

Human, Rat

Antibody description

Polyclonal antibody to STX1A

Preparation

Antigen: Recombinant fusion protein containing a sequence corresponding to amino acids 1-288 of human STX1A (NP_004594.1).

Formulation

PBS with 0.02% sodium azide, 50% glycerol, pH7.3.

Storage

Store at -20°C. Avoid freeze / thaw cycles.

Clonality

Polyclonal

Ig Type

Rabbit IgG

Applications

WB, IHC, IF

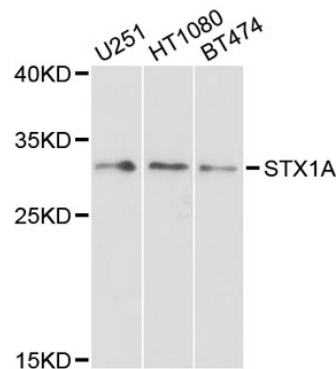
Dilutions

WB 1:500 - 1:2000

IHC 1:50 - 1:100

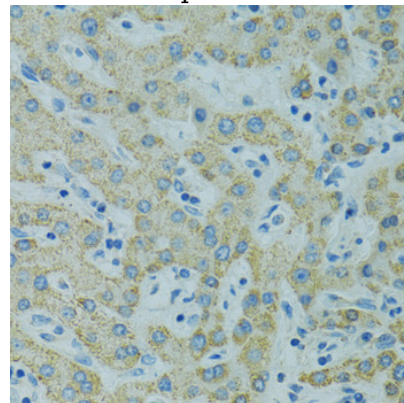
IF 1:50 - 1:100

Validations



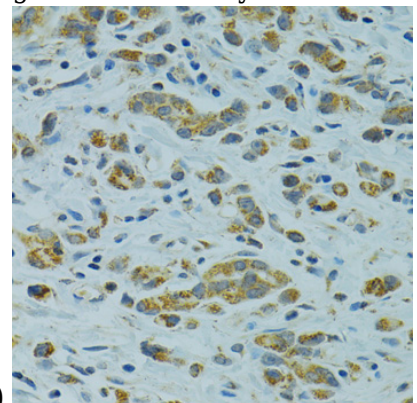
Western blot - STX1A Polyclonal Antibody

Western blot analysis of extracts of various cell lines, using STX1A antibody at 1:1000 dilution. Secondary antibody: HRP Goat Anti-Rabbit IgG (H+L) at 1:10000 dilution. Lysates/proteins: 25ug per lane. Blocking buffer: 3% nonfat dry milk in TBST. Detection: ECL Basic Kit. Exposure time: 60s.



Immunohistochemistry - STX1A Polyclonal Antibody

Immunohistochemistry of paraffin-embedded human liver using STX1A antibody at dilution of



1:100 (40x lens).

STX1A Polyclonal Antibody



Catalog Number: 164558

Immunohistochemistry - STX1A Polyclonal Antibody

Immunohistochemistry of paraffin-embedded human gastric cancer using STX1A antibody at dilution of 1:100 (40x lens).