

SH2B1 Polyclonal Antibody



Catalog Number: 164556

Product name

SH2B1 Polyclonal Antibody

Specificity

Human, Mouse, Rat

Antibody description

Polyclonal antibody to SH2B1

Preparation

Antigen: Recombinant fusion protein containing a sequence corresponding to amino acids 360-520 of human SH2B1 (NP_056318.2).

Formulation

PBS with 0.02% sodium azide, 50% glycerol, pH7.3.

Storage

Store at -20°C. Avoid freeze / thaw cycles.

Clonality

Polyclonal

Ig Type

Rabbit IgG

Applications

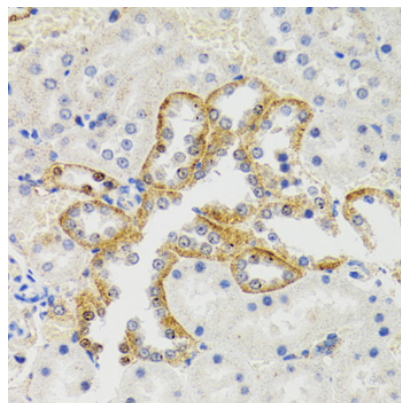
IHC, IF

Dilutions

IHC 1:50 - 1:200

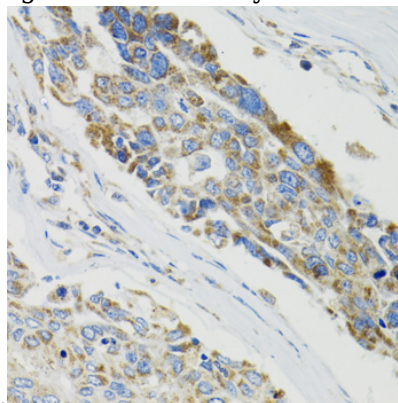
IF 1:20 - 1:50

Validations



Immunohistochemistry - SH2B1 Polyclonal Antibody

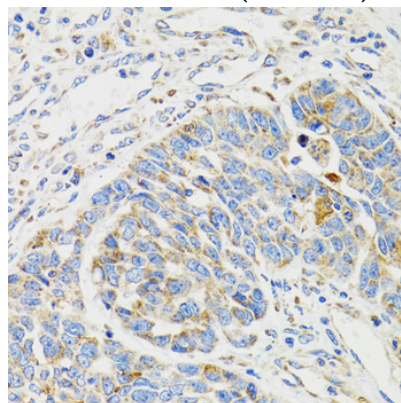
Immunohistochemistry of paraffin-embedded rat kidney using SH2B1 Antibody at dilution of 1:100



(40x lens).

Immunohistochemistry - SH2B1 Polyclonal Antibody

Immunohistochemistry of paraffin-embedded human liver cancer using SH2B1 Antibody at dilution of 1:100 (40x lens).



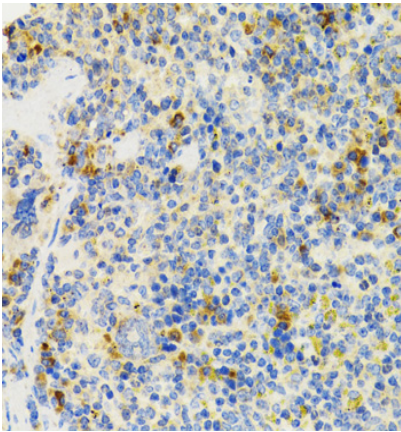
Immunohistochemistry - SH2B1 Polyclonal Antibody

SH2B1 Polyclonal Antibody



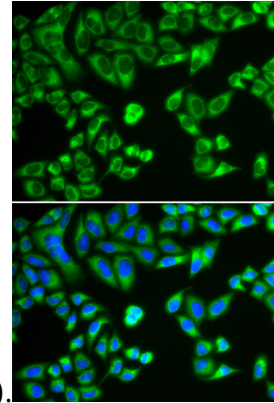
Catalog Number: 164556

Immunohistochemistry of paraffin-embedded human esophageal cancer using SH2B1 Antibody at dilution of 1:100 (40x lens).



Immunohistochemistry - SH2B1 Polyclonal Antibody

Immunohistochemistry of paraffin-embedded mouse spleen using SH2B1 Antibody at dilution of



1:100 (40x lens).

Immunofluorescence - SH2B1 Polyclonal Antibody

Immunofluorescence analysis of HeLa cells using SH2B1 antibody . Blue: DAPI for nuclear staining.