

# FZR1 Polyclonal Antibody



Catalog Number: 164550

## Product name

FZR1 Polyclonal Antibody

## Specificity

Human, Mouse

## Antibody description

Polyclonal antibody to FZR1

## Preparation

Antigen: Recombinant fusion protein containing a sequence corresponding to amino acids 224-493 of human FZR1 (NP\_057347.2).

## Formulation

PBS with 0.02% sodium azide, 50% glycerol, pH7.3.

## Storage

Store at -20°C. Avoid freeze / thaw cycles.

## Clonality

Polyclonal

## Ig Type

Rabbit IgG

## Applications

WB, IHC, IF

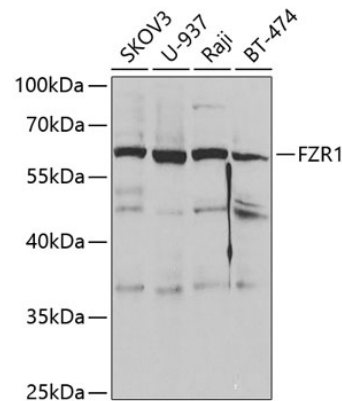
## Dilutions

WB 1:500 - 1:2000

IHC 1:50 - 1:200

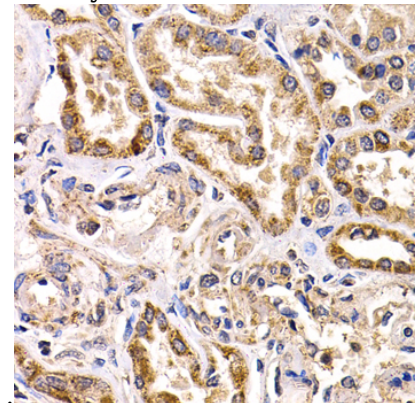
IF 1:20 - 1:50

## Validations



Western blot - FZR1 Polyclonal Antibody

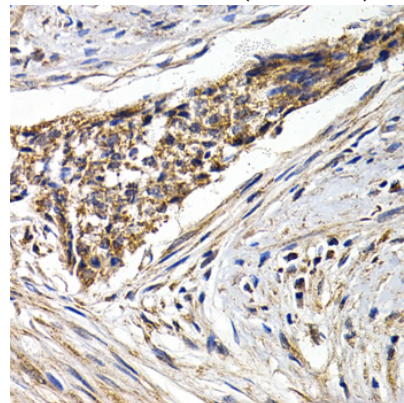
Western blot analysis of extracts of various cell lines, using FZR1 antibody at 1:1000 dilution. Secondary antibody: HRP Goat Anti-Rabbit IgG (H+L) at 1:10000 dilution. Lysates/proteins: 25ug per lane. Blocking buffer: 3% nonfat dry milk in TBST. Detection: ECL



Enhanced Kit .

Immunohistochemistry - FZR1 Polyclonal Antibody

Immunohistochemistry of paraffin-embedded human kidney cancer using FZR1 antibody at dilution of 1:200 (40x lens).



# FZR1 Polyclonal Antibody

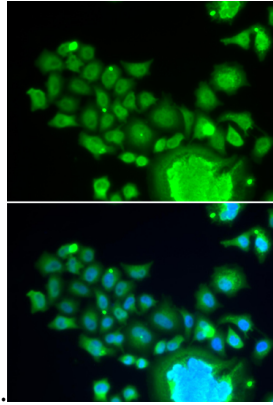


Catalog Number: 164550

---

## Immunohistochemistry - FZR1 Polyclonal Antibody

Immunohistochemistry of paraffin-embedded human esophagus cancer using FZR1 antibody at



dilution of 1:200 (40x lens).

## Immunofluorescence - FZR1 Polyclonal Antibody

Immunofluorescence analysis of HeLa cells using FZR1 antibody . Blue: DAPI for nuclear staining.