

MAGEA1 Polyclonal Antibody



Catalog Number: 164527

Product name

MAGEA1 Polyclonal Antibody

Specificity

Human

Antibody description

Polyclonal antibody to MAGEA1

Preparation

Antigen: Recombinant fusion protein containing a sequence corresponding to amino acids 1-309 of human MAGEA1 (NP_004979.3).

Formulation

PBS with 0.02% sodium azide, 50% glycerol, pH7.3.

Storage

Store at -20°C. Avoid freeze / thaw cycles.

Clonality

Polyclonal

Ig Type

Rabbit IgG

Applications

WB, IHC, IF

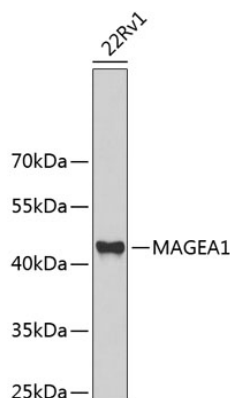
Dilutions

WB 1:500 - 1:2000

IHC 1:50 - 1:200

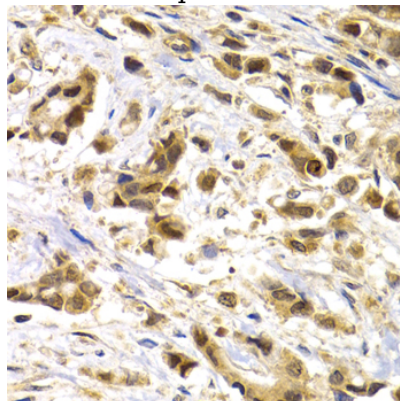
IF 1:50 - 1:100

Validations



Western blot - MAGEA1 Polyclonal Antibody

Western blot analysis of extracts of 22Rv1 cells, using MAGEA1 antibody at 1:1000 dilution. Secondary antibody: HRP Goat Anti-Rabbit IgG (H+L) at 1:10000 dilution. Lysates/proteins: 25ug per lane. Blocking buffer: 3% nonfat dry milk in TBST. Detection: ECL Basic Kit. Exposure time: 30s.



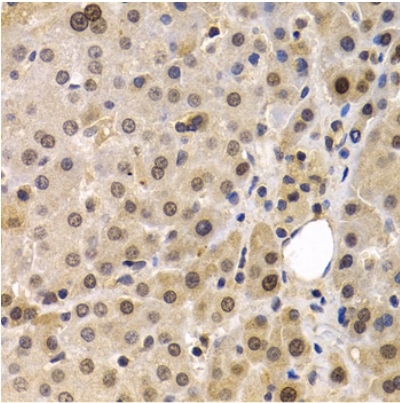
Immunohistochemistry - MAGEA1 Polyclonal Antibody

Immunohistochemistry of paraffin-embedded human breast cancer using MAGEA1 antibody at dilution of 1:200 (40x lens).

MAGEA1 Polyclonal Antibody

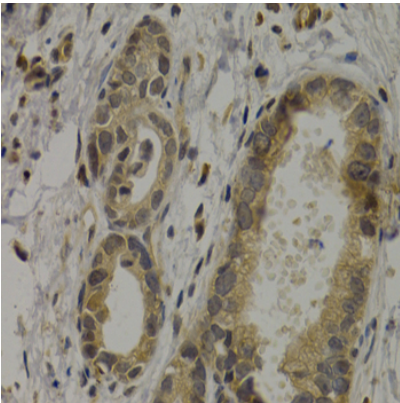


Catalog Number: 164527



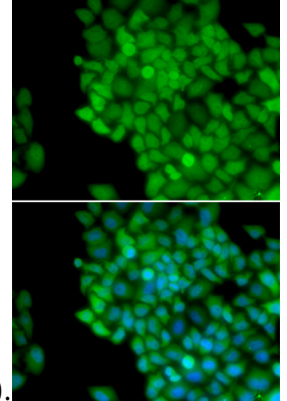
Immunohistochemistry - MAGEA1 Polyclonal Antibody

Immunohistochemistry of paraffin-embedded human liver cancer using MAGEA1 antibody at dilution of 1:200 (40x lens).



Immunohistochemistry - MAGEA1 Polyclonal Antibody

Immunohistochemistry of paraffin-embedded human stomach cancer using MAGEA1 antibody at



dilution of 1:200 (40x lens).

Immunofluorescence - MAGEA1 Polyclonal Antibody

Immunofluorescence analysis of HeLa cells using MAGEA1 antibody . Blue: DAPI for nuclear staining.