

ID3 Polyclonal Antibody

Catalog Number: 164496

Product name

ID3 Polyclonal Antibody

Specificity

Human, Mouse, Rat

Antibody description

Polyclonal antibody to ID3

Preparation

Antigen: Recombinant fusion protein containing a sequence corresponding to amino acids 1-119 of human ID3 (NP_002158.3).

Formulation

PBS with 0.02% sodium azide, 50% glycerol, pH7.3.

Storage

Store at -20°C. Avoid freeze / thaw cycles.

Clonality

Polyclonal

Ig Type

Rabbit IgG

Applications

WB, IHC, IF

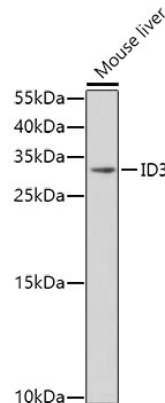
Dilutions

WB 1:500 - 1:2000

IHC 1:50 - 1:200

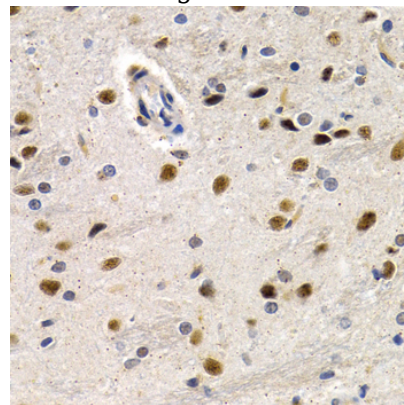
IF 1:50 - 1:100

Validations



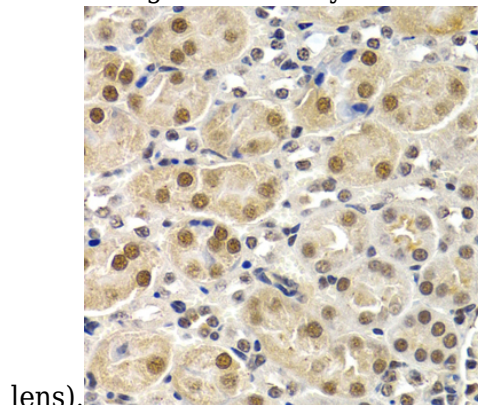
Western blot - ID3 Polyclonal Antibody

Western blot analysis of extracts of mouse liver, using ID3 antibody at 1:1000 dilution. Secondary antibody: HRP Goat Anti-Rabbit IgG (H+L) at 1:10000 dilution. Lysates/proteins: 25ug per lane. Blocking buffer: 3% nonfat dry milk in TBST.



Immunohistochemistry - ID3 Polyclonal Antibody

Immunohistochemistry of paraffin-embedded rat brain using ID3 antibody at dilution of 1:200 (40x



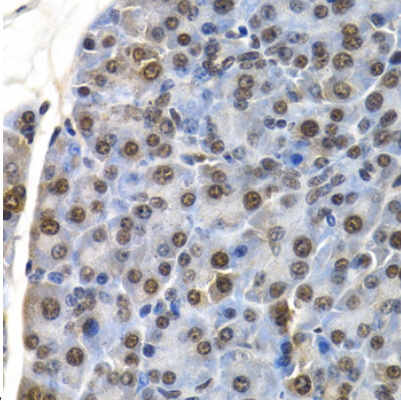
lens).

Immunohistochemistry - ID3 Polyclonal Antibody

ID3 Polyclonal Antibody

Catalog Number: 164496

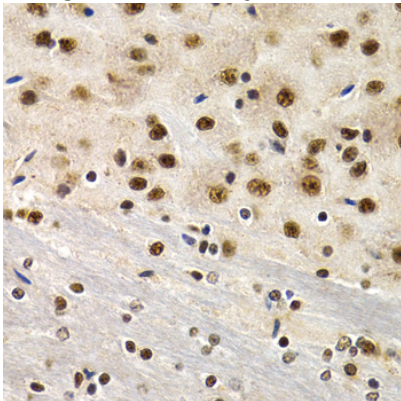
Immunohistochemistry of paraffin-embedded mouse kidney using ID3 antibody at dilution of



1:200 (40x lens).

Immunohistochemistry - ID3 Polyclonal Antibody

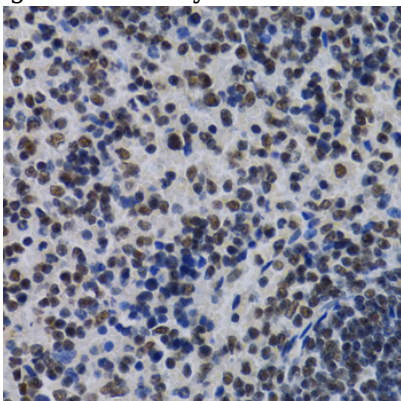
Immunohistochemistry of paraffin-embedded mouse pancreas using ID3 antibody at dilution of



1:200 (40x lens).

Immunohistochemistry - ID3 Polyclonal Antibody

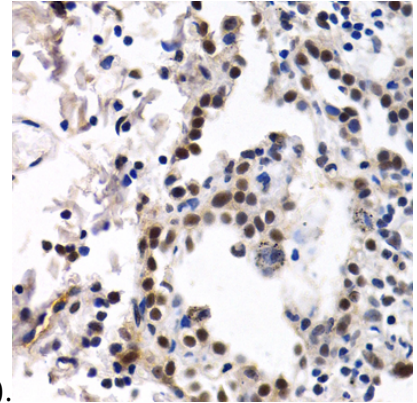
Immunohistochemistry of paraffin-embedded mouse brain using ID3 antibody at dilution of



1:200 (40x lens).

Immunohistochemistry - ID3 Polyclonal Antibody

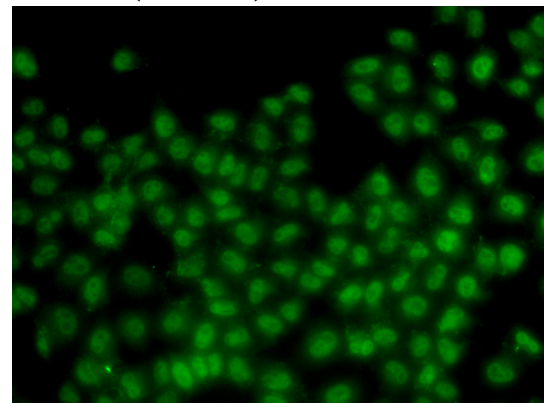
Immunohistochemistry of paraffin-embedded mouse spleen using ID3 antibody at dilution of



1:200 (40x lens).

Immunohistochemistry - ID3 Polyclonal Antibody

Immunohistochemistry of paraffin-embedded human lung cancer using ID3 antibody at dilution of 1:200 (40x lens).



Immunofluorescence - ID3 Polyclonal Antibody

Immunofluorescence analysis of HeLa cells using ID3 antibody .