

# PSMD9 Polyclonal Antibody



Catalog Number: 164488

## Product name

PSMD9 Polyclonal Antibody

## Specificity

Human, Mouse, Rat

## Antibody description

Polyclonal antibody to PSMD9

## Preparation

Antigen: Recombinant fusion protein containing a sequence corresponding to amino acids 1-223 of human PSMD9 (NP\_002804.2).

## Formulation

PBS with 0.02% sodium azide, 50% glycerol, pH7.3.

## Storage

Store at -20°C. Avoid freeze / thaw cycles.

## Clonality

Polyclonal

## Ig Type

Rabbit IgG

## Applications

WB, IHC, IF

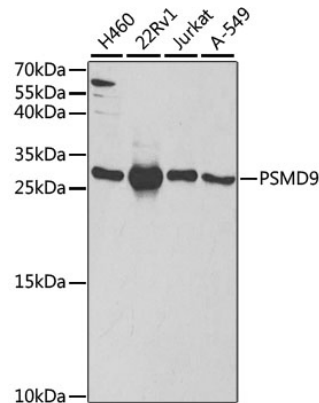
## Dilutions

WB 1:500 - 1:2000

IHC 1:50 - 1:200

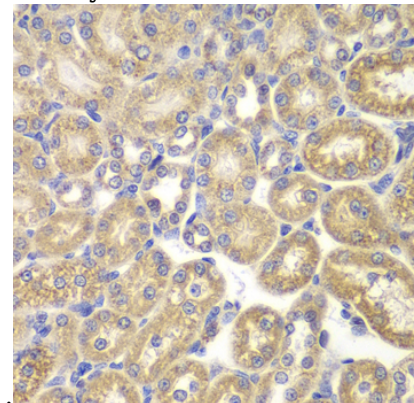
IF 1:50 - 1:200

## Validations



Western blot - PSMD9 Polyclonal Antibody

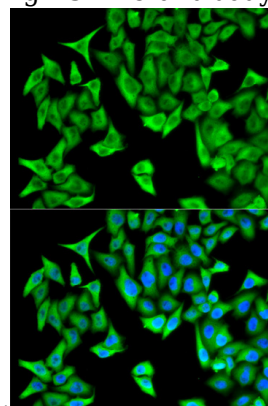
Western blot analysis of extracts of various cell lines, using PSMD9 antibody at 1:1000 dilution. Secondary antibody: HRP Goat Anti-Rabbit IgG (H+L) at 1:10000 dilution. Lysates/proteins: 25ug per lane. Blocking buffer: 3% nonfat dry milk in TBST. Detection: ECL



Enhanced Kit .

Immunohistochemistry - PSMD9 Polyclonal Antibody

Immunohistochemistry of paraffin-embedded rat kidney using PSMD9 antibody at dilution of 1:200



(40x lens).

# PSMD9 Polyclonal Antibody



Catalog Number: 164488

---

Immunofluorescence - PSMD9 Polyclonal Antibody

Immunofluorescence analysis of HeLa cells using PSMD9 antibody . Blue: DAPI for nuclear staining.