

KLKB1 Polyclonal Antibody

Catalog Number: 164475

Product name

KLKB1 Polyclonal Antibody

Specificity

Human, Mouse, Rat

Antibody description

Polyclonal antibody to KLKB1

Preparation

Antigen: Recombinant fusion protein containing a sequence corresponding to amino acids 20-300 of human KLKB1 (NP_000883.2).

Formulation

PBS with 0.02% sodium azide, 50% glycerol, pH7.3.

Storage

Store at -20°C. Avoid freeze / thaw cycles.

Clonality

Polyclonal

Ig Type

Rabbit IgG

Applications

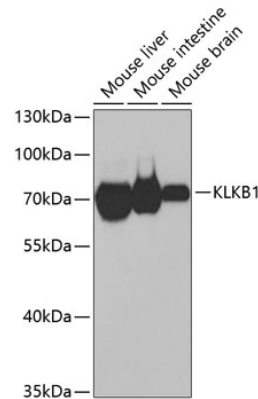
WB, IHC

Dilutions

WB 1:500 - 1:2000

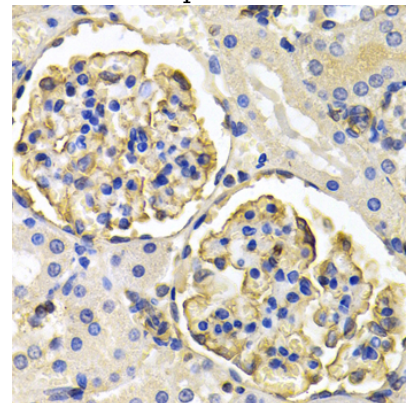
IHC 1:50 - 1:200

Validations



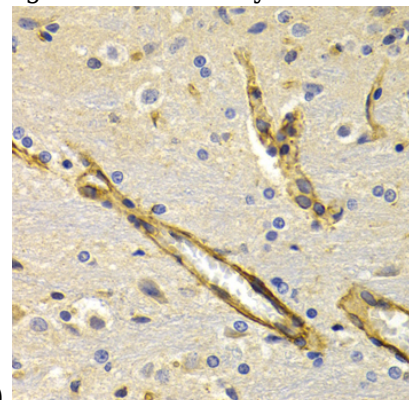
Western blot - KLKB1 Polyclonal Antibody

Western blot analysis of extracts of various cell lines, using KLKB1 antibody at 1:1000 dilution. Secondary antibody: HRP Goat Anti-Rabbit IgG (H+L) at 1:10000 dilution. Lysates/proteins: 25ug per lane. Blocking buffer: 3% nonfat dry milk in TBST. Detection: ECL Basic Kit. Exposure time: 30s.



Immunohistochemistry - KLKB1 Polyclonal Antibody

Immunohistochemistry of paraffin-embedded rat kidney using KLKB1 antibody at dilution of 1:200



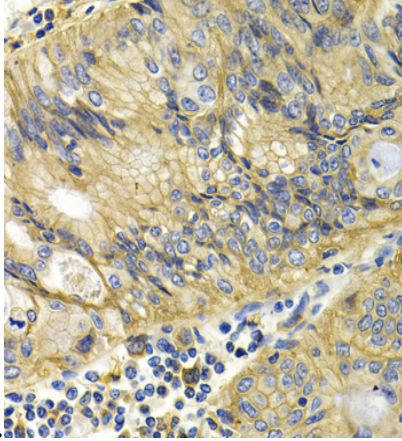
(40x lens).

KLKB1 Polyclonal Antibody

Catalog Number: 164475

Immunohistochemistry - KLKB1 Polyclonal Antibody

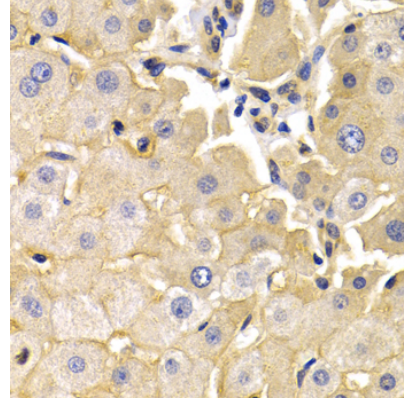
Immunohistochemistry of paraffin-embedded rat brain using KLKB1 antibody at dilution of 1:200



(40x lens)

Immunohistochemistry - KLKB1 Polyclonal Antibody

Immunohistochemistry of paraffin-embedded human colon carcinoma using KLKB1 antibody at dilution of 1:200 (40x lens).



Immunohistochemistry - KLKB1 Polyclonal Antibody

Immunohistochemistry of paraffin-embedded human liver cancer using KLKB1 antibody at dilution of 1:200 (40x lens).