

# EIF4A1 Polyclonal Antibody



Catalog Number: 164470

## Product name

EIF4A1 Polyclonal Antibody

WB 1:500 - 1:2000

IF 1:20 - 1:50

IP 1:20 - 1:50

## Specificity

Human, Mouse, Rat

## Antibody description

Polyclonal antibody to EIF4A1

## Preparation

Antigen: Recombinant fusion protein containing a sequence corresponding to amino acids 1-406 of human EIF4A1 (NP\_001407.1).

## Formulation

PBS with 0.02% sodium azide, 50% glycerol, pH7.3.

## Storage

Store at -20°C. Avoid freeze / thaw cycles.

## Clonality

Polyclonal

## Ig Type

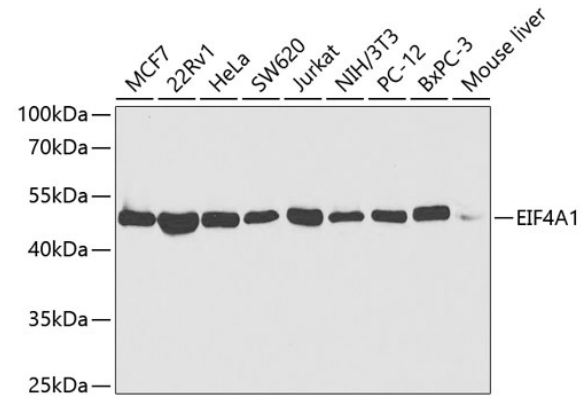
Rabbit IgG

## Applications

WB, IF, IP

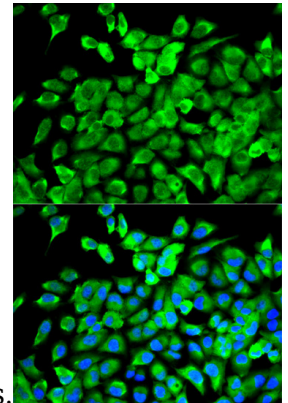
## Dilutions

## Validations



Western blot - EIF4A1 Polyclonal Antibody

Western blot analysis of extracts of various cell lines, using EIF4A1 antibody at 1:1000 dilution. Secondary antibody: HRP Goat Anti-Rabbit IgG (H+L) at 1:10000 dilution. Lysates/proteins: 25ug per lane. Blocking buffer: 3% nonfat dry milk in TBST. Detection: ECL



Basic Kit .Exposure time: 30s.

Immunofluorescence - EIF4A1 Polyclonal Antibody

Immunofluorescence analysis of MCF-7 cells using EIF4A1 antibody . Blue: DAPI for nuclear staining.