

FBXW7 Polyclonal Antibody



Catalog Number: 164459

Product name

FBXW7 Polyclonal Antibody

Specificity

Human, Mouse

Antibody description

Polyclonal antibody to FBXW7

Preparation

Antigen: A synthetic peptide of human FBXW7

Formulation

PBS with 0.02% sodium azide, pH7.3.

Storage

Store at 4°C. Avoid freeze / thaw cycles.

Clonality

Polyclonal

Ig Type

Rabbit IgG

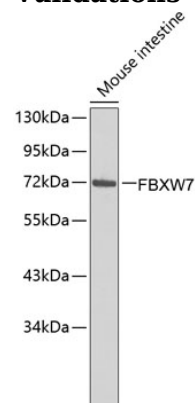
Applications

WB

Dilutions

WB 1:500 - 1:1000

Validations



Western blot - FBXW7 Polyclonal Antibody

Western blot analysis of extracts of mouse intestine, using FBXW7 antibody. Secondary antibody: HRP Goat Anti-Rabbit IgG (H+L) at 1:10000 dilution. Lysates/proteins: 25ug per lane. Blocking buffer: 3% nonfat dry milk in TBST.