

CXCR5 Polyclonal Antibody



Catalog Number: 164457

Product name

CXCR5 Polyclonal Antibody

Specificity

Human

Antibody description

Polyclonal antibody to CXCR5

Preparation

Antigen: A synthetic peptide corresponding to a sequence within amino acids 300 to the C-terminus of human CXCR5 (NP_001707.1).

Formulation

PBS with 0.02% sodium azide, 50% glycerol, pH7.3.

Storage

Store at -20°C. Avoid freeze / thaw cycles.

Clonality

Polyclonal

Ig Type

Rabbit IgG

Applications

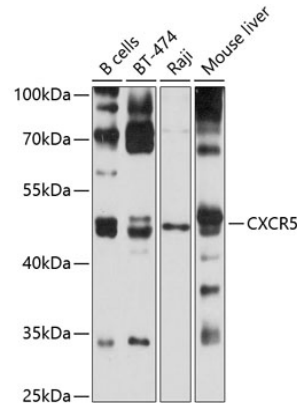
WB, IF

Dilutions

WB 1:500 - 1:2000

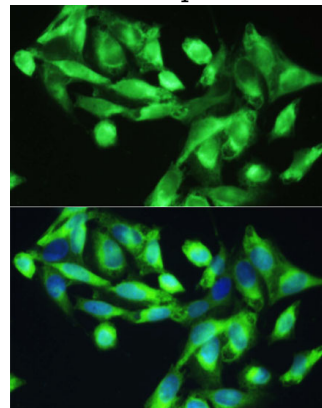
IF 1:50 - 1:200

Validations



Western blot - CXCR5 Polyclonal Antibody

Western blot analysis of extracts of various cell lines, using CXCR5 antibody at 1:1000 dilution. Secondary antibody: HRP Goat Anti-Rabbit IgG (H+L) at 1:10000 dilution. Lysates/proteins: 25ug per lane. Blocking buffer: 3% nonfat dry milk in TBST. Detection: ECL Basic Kit. Exposure time: 10s.



Immunofluorescence - CXCR5 Polyclonal Antibody

Immunofluorescence analysis of U2OS cells using CXCR5 antibody at dilution of 1:100. Blue: DAPI for nuclear staining.