

CBR4 Polyclonal Antibody



Catalog Number: 164443

Product name

CBR4 Polyclonal Antibody

Specificity

Human, Rat

Antibody description

Polyclonal antibody to CBR4

Preparation

Antigen: Recombinant fusion protein containing a sequence corresponding to amino acids 1-237 of human CBR4 (NP_116172.2).

Formulation

PBS with 0.02% sodium azide, 50% glycerol, pH7.3.

Storage

Store at -20°C. Avoid freeze / thaw cycles.

Clonality

Polyclonal

Ig Type

Rabbit IgG

Applications

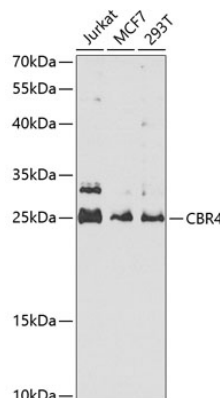
WB, IHC

Dilutions

WB 1:200 - 1:2000

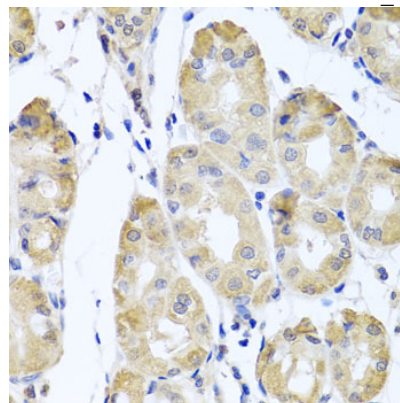
IHC 1:20 - 1:200

Validations



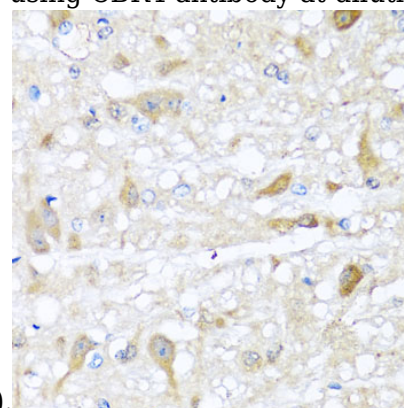
Western blot - CBR4 Polyclonal Antibody

Western blot analysis of extracts of various cell lines, using CBR4 antibody at 1:1000 dilution. Secondary antibody: HRP Goat Anti-Rabbit IgG (H+L) at 1:10000 dilution. Lysates/proteins: 25ug per lane. Blocking buffer: 3% nonfat dry milk in TBST. Detection: ECL Enhanced Kit. Exposure



Immunohistochemistry - CBR4 Polyclonal Antibody

Immunohistochemistry of paraffin-embedded human stomach using CBR4 antibody at dilution of



1:100 (40x lens).

CBR4 Polyclonal Antibody



Catalog Number: 164443

Immunohistochemistry - CBR4 Polyclonal Antibody brain using CBR4 antibody at dilution of 1:100
(40x lens).
Immunohistochemistry of paraffin-embedded rat