

CROT Polyclonal Antibody



Catalog Number: 164396

Product name

CROT Polyclonal Antibody

Specificity

Human, Mouse, Rat

Antibody description

Polyclonal antibody to CROT

Preparation

Antigen: Recombinant fusion protein containing a sequence corresponding to amino acids 1-87 of human CROT (NP_001230674.1).

Formulation

PBS with 0.02% sodium azide, 50% glycerol, pH7.3.

Storage

Store at -20°C. Avoid freeze / thaw cycles.

Clonality

Polyclonal

Ig Type

Rabbit IgG

Applications

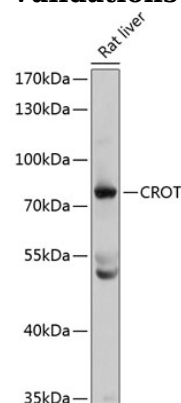
WB, IP

Dilutions

WB 1:500 - 1:2000

IP 1:50 - 1:200

Validations



Western blot - CROT Polyclonal Antibody

Western blot analysis of extracts of rat liver, using CROT antibody at 1:3000 dilution. Secondary antibody: HRP Goat Anti-Rabbit IgG (H+L) at 1:10000 dilution. Lysates/proteins: 25ug per lane. Blocking buffer: 3% nonfat dry milk in TBST. Detection: ECL Basic Kit. Exposure time: 5s.