

# IP6K2 Polyclonal Antibody



Catalog Number: 164387

## Product name

IP6K2 Polyclonal Antibody

## Specificity

Mouse

## Antibody description

Polyclonal antibody to IP6K2

## Preparation

Antigen: A synthetic Peptide of human IP6K2

## Formulation

PBS with 0.02% sodium azide, pH7.3.

## Storage

Store at 4°C. Avoid freeze / thaw cycles.

## Clonality

Polyclonal

## Ig Type

Rabbit IgG

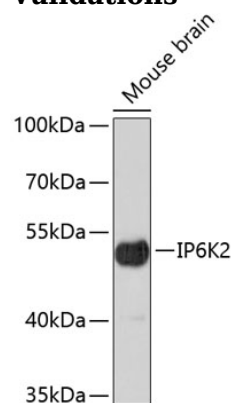
## Applications

WB

## Dilutions

WB 1:500 - 1:1000

## Validations



Western blot - IP6K2 Polyclonal Antibody

Western blot analysis of extracts of mouse brain, using IP6K2 antibody. Secondary antibody: HRP Goat Anti-Rabbit IgG (H+L) at 1:10000 dilution. Lysates/proteins: 25ug per lane. Blocking buffer: 3% nonfat dry milk in TBST.