

# SEC11A Polyclonal Antibody



Catalog Number: 164357

## Product name

SEC11A Polyclonal Antibody

## Specificity

Human

## Antibody description

Polyclonal antibody to SEC11A

## Preparation

Antigen: A synthetic Peptide of human SEC11A

## Formulation

PBS with 0.02% sodium azide, pH7.3.

## Storage

Store at 4°C. Avoid freeze / thaw cycles.

## Clonality

Polyclonal

## Ig Type

Rabbit IgG

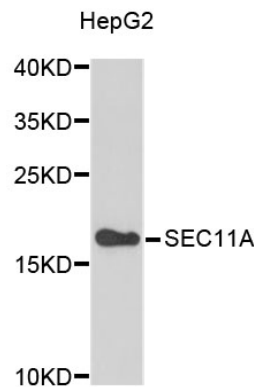
## Applications

WB

## Dilutions

WB 1:500 - 1:1000

## Validations



Western blot - SEC11A Polyclonal Antibody

Western blot analysis of extracts of HepG2 cells, using SEC11A antibody .Secondary antibody: HRP Goat Anti-Rabbit IgG (H+L) at 1:10000 dilution.Lysates/proteins: 25ug per lane.Blocking buffer: 3% nonfat dry milk in TBST.