

CCT8 Polyclonal Antibody



Catalog Number: 164333

Product name

CCT8 Polyclonal Antibody

Specificity

Human, Mouse, Rat

Antibody description

Polyclonal antibody to CCT8

Preparation

Antigen: Recombinant fusion protein containing a sequence corresponding to amino acids 248-497 of human CCT8 (NP_001269837.1).

Formulation

PBS with 0.02% sodium azide, 50% glycerol, pH7.3.

Storage

Store at -20°C. Avoid freeze / thaw cycles.

Clonality

Polyclonal

Ig Type

Rabbit IgG

Applications

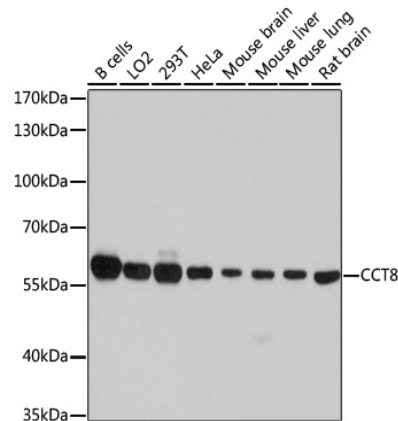
WB, IF

Dilutions

WB 1:1000 - 1:2000

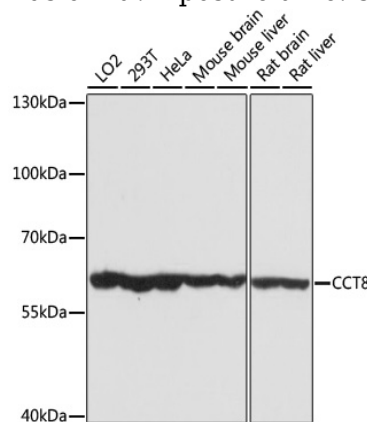
IF 1:50 - 1:200

Validations



Western blot - CCT8 Polyclonal Antibody

Western blot analysis of extracts of various cell lines, using CCT8 antibody at 1:7000 dilution. Secondary antibody: HRP Goat Anti-Rabbit IgG (H+L) at 1:10000 dilution. Lysates/proteins: 25ug per lane. Blocking buffer: 3% nonfat dry milk in TBST. Detection: ECL Basic Kit. Exposure time: 5s.

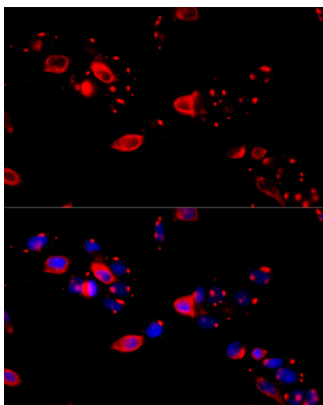


Western blot - CCT8 Polyclonal Antibody

Western blot analysis of extracts of various cells, using CCT8 antibody at 1:7000 dilution ratio through one-step method. Secondary antibody: HRP Goat Anti-Rabbit IgG (H+L) at 1:4000 dilution. Lysates/proteins: 25ug per lane. Blocking buffer: 3% nonfat dry milk in TBST. Detection: ECL Basic Kit. Exposure time: 10s.

CCT8 Polyclonal Antibody

Catalog Number: 164333



Immunofluorescence - CCT8 Polyclonal Antibody

Immunofluorescence analysis of HeLa cells using CCT8 antibody at dilution of 1:100 (40x lens).
Blue: DAPI for nuclear staining.