

CRTAP Polyclonal Antibody



Catalog Number: 164326

Product name

CRTAP Polyclonal Antibody

Specificity

Human, Mouse, Rat

Antibody description

Polyclonal antibody to CRTAP

Preparation

Antigen: Recombinant fusion protein containing a sequence corresponding to amino acids 20-240 of human CRTAP (NP_006362.1).

Formulation

PBS with 0.02% sodium azide, 50% glycerol, pH7.3.

Storage

Store at -20°C. Avoid freeze / thaw cycles.

Clonality

Polyclonal

Ig Type

Rabbit IgG

Applications

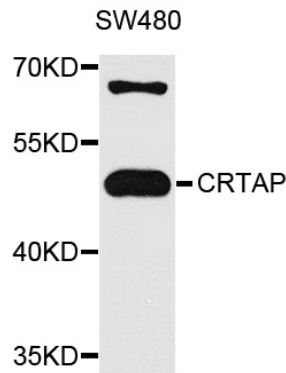
WB, IHC

Dilutions

WB 1:500 - 1:2000

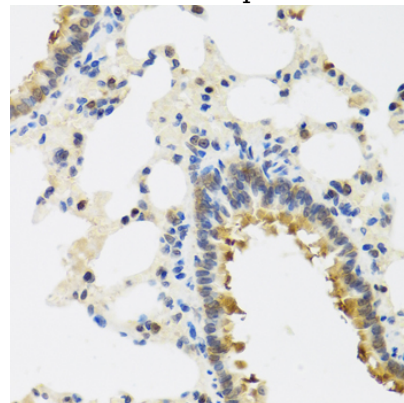
IHC 1:50 - 1:200

Validations



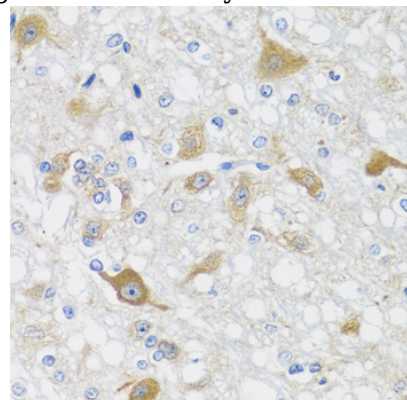
Western blot - CRTAP Polyclonal Antibody

Western blot analysis of extracts of SW480 cells, using CRTAP antibody at 1:1000 dilution. Secondary antibody: HRP Goat Anti-Rabbit IgG (H+L) at 1:10000 dilution. Lysates/proteins: 25ug per lane. Blocking buffer: 3% nonfat dry milk in TBST. Detection: ECL Enhanced Kit. Exposure time: 90s.



Immunohistochemistry - CRTAP Polyclonal Antibody

Immunohistochemistry of paraffin-embedded rat lung using CRTAP antibody at dilution of 1:100



(40x lens).

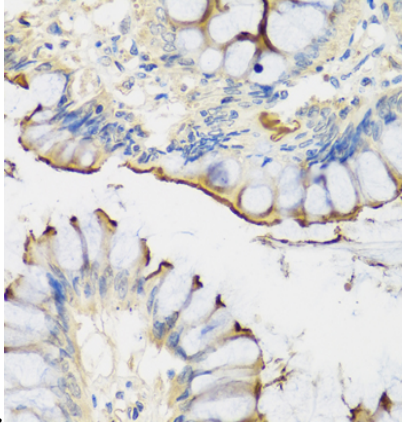
CRTAP Polyclonal Antibody



Catalog Number: 164326

Immunohistochemistry - CRTAP Polyclonal Antibody

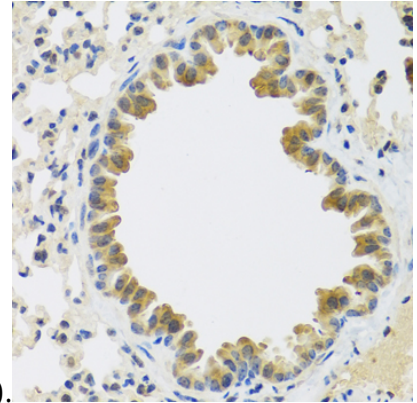
Immunohistochemistry of paraffin-embedded rat brain using CRTAP antibody at dilution of 1:100



(40x lens).

Immunohistochemistry - CRTAP Polyclonal Antibody

Immunohistochemistry of paraffin-embedded human colon using CRTAP antibody at dilution of



1:100 (40x lens).

Immunohistochemistry - CRTAP Polyclonal Antibody

Immunohistochemistry of paraffin-embedded mouse lung using CRTAP antibody at dilution of 1:100 (40x lens).