

# CDC42EP2 Polyclonal Antibody



Catalog Number: 164325

## Product name

CDC42EP2 Polyclonal Antibody

## Specificity

Human, Mouse

## Antibody description

Polyclonal antibody to CDC42EP2

## Preparation

Antigen: A synthetic Peptide of human CDC42EP2

## Formulation

PBS with 0.02% sodium azide, pH7.3.

## Storage

Store at 4°C. Avoid freeze / thaw cycles.

## Clonality

Polyclonal

## Ig Type

Rabbit IgG

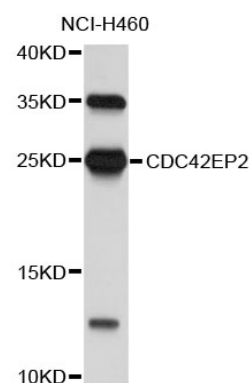
## Applications

WB

## Dilutions

WB 1:500 - 1:1000

## Validations



Western blot - CDC42EP2 Polyclonal Antibody

Western blot analysis of extracts of NCI-H460 cells, using CDC42EP2 antibody. Secondary antibody: HRP Goat Anti-Rabbit IgG (H+L) at 1:10000 dilution. Lysates/proteins: 25ug per lane. Blocking buffer: 3% nonfat dry milk in TBST.